

bsm-51675M**[Primary Antibody]****HIF1AN Mouse mAb****Bioss**
ANTIBODIES

www.bioss.com.cn

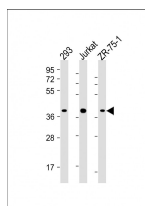
sales@bioss.com.cn

techsupport@bioss.com.cn

400-901-9800

— DATASHEET —

| | | |
|--|-------------------------|--|
| Host: Mouse | Isotype: IgG1, k | Applications: WB (1:1000-5000) ICC/IF (1:50-200) |
| Clonality: Monoclonal | CloneNo.: L8U9 | |
| GeneID: 55662 | SWISS: Q5W147 | Reactivity: Human |
| Target: HIF1AN | | |
| Immunogen: KLH conjugated synthetic peptide derived from human HIF1AN: 1-349/349. | | |
| Purification: affinity purified by Protein G | | Predicted MW.: 38 kDa |
| Concentration: 1mg/ml | | Subcellular Location: Nucleus |
| Storage: 0.01M TBS (pH7.4) with 1% BSA, 0.02% Proclin300 and 50% Glycerol. Shipped at 4°C. Store at -20°C for one year. Avoid repeated freeze/thaw cycles. | | |
| Background: HIF1AN (Hypoxia inducible factor 1 alpha inhibitor) is a corepressor that interacts with hypoxia inducible factor 1 (HIF1) alpha and the von Hippel Lindau tumor suppressor protein to mediate repression of HIF1 transcriptional activity. | | |

— VALIDATION IMAGES —

Sample: Lane 1: 293 cell lysates Lane 2: Jurkat cell lysates Lane 3: ZR-75-1 cell lysates Primary: Anti-HIF1AN (bsm-51675M) at 1/4000 dilution Secondary: IRDye800CW Goat Anti-Mouse IgG at 1/20000 dilution Predicted band size: 38 kD Observed band size: 38 kD