

bs-16311R**[Primary Antibody]****GRF2 Rabbit pAb****BioSS**
ANTIBODIES

www.bioss.com.cn

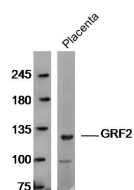
sales@bioss.com.cn

techsupport@bioss.com.cn

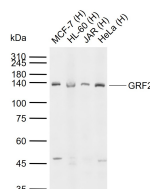
400-901-9800

— DATASHEET —

Host: Rabbit	Isotype: IgG	Applications: WB (1:500-2000)
Clonality: Polyclonal		Reactivity: Human, Mouse (predicted: Rat, Sheep, Cow)
GeneID: 2889	SWISS: Q13905	Predicted MW.: 140 kDa
Target: GRF2		Subcellular Location: Cytoplasm
Immunogen: KLH conjugated synthetic peptide derived from human GRF2: 20-120/1237.		
Purification: affinity purified by Protein A		
Concentration: 1mg/ml		
Storage: 0.01M TBS (pH7.4) with 1% BSA, 0.02% Proclin300 and 50% Glycerol. Shipped at 4°C. Store at -20°C for one year. Avoid repeated freeze/thaw cycles.		
Background: This gene encodes a human guanine nucleotide exchange factor. It transduces signals from CRK by binding the SH3 domain of CRK, and activating several members of the Ras family of GTPases. This signaling cascade that may be involved in apoptosis, integrin-mediated signal transduction, and cell transformation. Several alternatively spliced transcript variants of this gene have been described, but the full-length nature of some variants has not been determined. [provided by RefSeq, Jul 2008]		

— VALIDATION IMAGES —

Sample: Placenta (Mouse) Lysate at 40 ug
Primary: Anti-GRF2 (bs-16311R) at 1/300 dilution
Secondary: IRDye800CW Goat Anti-Rabbit IgG at 1/20000 dilution Predicted band size: 140 kD
Observed band size: 120 kD



Sample: Lane 1: Human MCF-7 cell lysates Lane 2: Human HL-60 cell lysates Lane 3: Human JAR cell lysates Lane 4: Human HeLa cell lysates
Primary: Anti-GRF2 (bs-16311R) at 1/1000 dilution Secondary: IRDye800CW Goat Anti-Rabbit IgG at 1/20000 dilution Predicted band size: 140 kDa Observed band size: 140 kDa