

bsm-51642M**[Primary Antibody]****Atrial natriuretic factor Mouse mAb****BioSS**
ANTIBODIES

www.bioss.com.cn

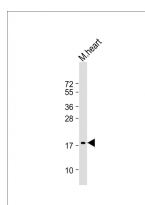
sales@bioss.com.cn

techsupport@bioss.com.cn

400-901-9800

— DATASHEET —

Host: Mouse	Isotype: IgG1, k	Applications: WB (1:500-2000) Reactivity: Mouse (predicted: Human) Predicted MW.: 3/17 kDa Subcellular Location: Secreted
Clonality: Monoclonal	CloneNo.: F12U7	
GeneID: 4878	SWISS: P01160	
Target: Atrial natriuretic factor		
Purification: affinity purified by Protein G		
Concentration: 1mg/ml		
Storage: 0.01M TBS (pH7.4) with 1% BSA, 0.02% Proclin300 and 50% Glycerol. Shipped at 4°C. Store at -20°C for one year. Avoid repeated freeze/thaw cycles.		
Background: The protein encoded by this gene belongs to the natriuretic peptide family. Natriuretic peptides are implicated in the control of extracellular fluid volume and electrolyte homeostasis. This protein is synthesized as a large precursor (containing a signal peptide), which is processed to release a peptide from the N-terminus with similarity to vasoactive peptide, cardiodilatin, and another peptide from the C-terminus with natriuretic-diuretic activity. Mutations in this gene have been associated with atrial fibrillation familial type 6. [provided by RefSeq, Sep 2009]..		

— VALIDATION IMAGES —

Sample: Lane 1: Mouse heart tissue lysates

Primary: Anti-Atrial natriuretic factor

(bsm-51642M) at 1/2000 dilution Secondary:

IRDye800CW Goat Anti-Mouse IgG at 1/20000

dilution Predicted band size: 3/17kD Observed

band size: 18 kD