

CBL Mouse mAb

Catalog Number: bsm-51640M

Target Protein: CBL

Concentration: 1mg/ml

Form: Liquid

Host: Mouse

Clonality: Monoclonal

Clone No.: H9A6

Isotype: IgG2b,k

Applications: WB (1:500-2000)

Reactivity: Human

Predicted MW: 100 kDa

Swiss Prot: P22681

Source: KLH conjugated synthetic peptide derived from human CBL: 451-650/906.

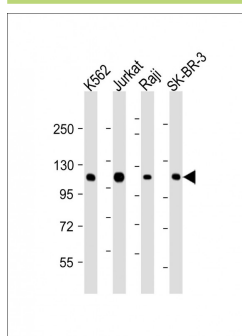
Purification: affinity purified by Protein G

Storage: 0.01M TBS (pH7.4) with 1% BSA, 0.02% Proclin300 and 50% Glycerol.

Shipped at 4°C. Store at -20°C for one year. Avoid repeated freeze/thaw cycles.

Background: Participates in signal transduction in hematopoietic cells. Adapter protein that functions as a negative regulator of many signaling pathways that start from receptors at the cell surface. Acts as an E3 ubiquitin-protein ligase, which accepts ubiquitin from specific E2 ubiquitin-conjugating enzymes, and then transfers it to substrates promoting their degradation by the proteasome. Recognizes activated receptor tyrosine kinases, including PDGFA, EGF and CSF1, and terminates signaling.

VALIDATION IMAGES



Sample: Lane 1: K562 cell lysates Lane 2: Jurkat cell lysates Lane 3: Raji cell lysates Lane 4: SK-BR-3 cell lysates
Primary: Anti-CBL (bsm-51640M) at 1/2000 dilution Secondary: IRDye800CW Goat Anti-Mouse IgG at 1/20000 dilution
Predicted band size: 100 kD Observed band size: 110 kD