

bsm-51637M**[Primary Antibody]****Natriuretic Peptide Receptor C Mouse mAb****BioSS**
ANTIBODIES

www.bioss.com.cn

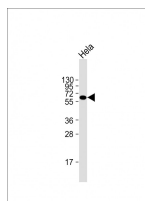
sales@bioss.com.cn

techsupport@bioss.com.cn

400-901-9800

— DATASHEET —

Host: Mouse	Isotype: IgG1,k	Applications: WB (1:500-2000)
Clonality: Monoclonal	CloneNo.: L07F1	
GeneID: 4883	SWISS: P17342	
Target: Natriuretic Peptide Receptor C		
Immunogen: KLH conjugated synthetic peptide derived from human Natriuretic Peptide Receptor C: 201-400/541.		
Purification: affinity purified by Protein G		Reactivity: Human
Concentration: 1mg/ml		
Storage: 0.01M TBS (pH7.4) with 1% BSA, 0.02% Proclin300 and 50% Glycerol. Shipped at 4°C. Store at -20°C for one year. Avoid repeated freeze/thaw cycles.		Predicted MW.: 57 kDa
Background: Natriuretic peptide receptor C does not exhibit guanylate cyclase activity. There seem to be at least three ANP receptors: two with guanylate cyclase activity (ANPA and ANPB) and one (ANPC) which is probably responsible for the clearance of ANP from the circulation without a role in signal transduction.		Subcellular Location: Cell membrane

— VALIDATION IMAGES —

Sample: Lane 1: Hela cell lysates Primary: Anti-Natriuretic Peptide Receptor C (bsm-51637M) at 1/2000 dilution Secondary: IRDye800CW Goat Anti-Mouse IgG at 1/20000 dilution Predicted band size: 57 kD Observed band size: 62 kD