

**bsm-51635M****[ Primary Antibody ]****ECT2 Mouse mAb****BioSS**  
**ANTIBODIES**

www.bioss.com.cn

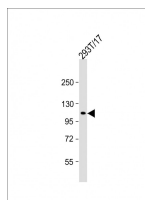
sales@bioss.com.cn

techsupport@bioss.com.cn

400-901-9800

**— DATASHEET —**

<b>Host:</b> Mouse	<b>Isotype:</b> IgG1, k	<b>Applications:</b> WB (1:500-1000)
<b>Clonality:</b> Monoclonal	<b>CloneNo.:</b> D12R1	<b>Reactivity:</b> Human
<b>GeneID:</b> 1894	<b>SWISS:</b> Q9H8V3	
<b>Target:</b> ECT2		
<b>Immunogen:</b> KLH conjugated synthetic peptide derived from human ECT2: 201-450/914.		<b>Predicted MW.:</b> 100 kDa
<b>Purification:</b> affinity purified by Protein G		<b>Subcellular Location:</b> Cytoplasm ,Nucleus
<b>Concentration:</b> 1mg/ml		
<b>Storage:</b> 0.01M TBS (pH7.4) with 1% BSA, 0.02% Proclin300 and 50% Glycerol. Shipped at 4°C. Store at -20°C for one year. Avoid repeated freeze/thaw cycles.		
<b>Background:</b> The protein encoded by this gene is a transforming protein that is related to Rho-specific exchange factors and yeast cell cycle regulators. The expression of this gene is elevated with the onset of DNA synthesis and remains elevated during G2 and M phases. In situ hybridization analysis showed that expression is at a high level in cells undergoing mitosis in regenerating liver. Thus, this protein is expressed in a cell cycle-dependent manner during liver regeneration, and is thought to have an important role in the regulation of cytokinesis. [provided by RefSeq].		

**— VALIDATION IMAGES —**

Sample: Lane 1: 293T/17 cell lysates Primary:  
Anti-ECT2 (bsm-51635M) at 1/1000 dilution  
Secondary: IRDye800CW Goat Anti-Mouse IgG at  
1/20000 dilution Predicted band size: 100 kD  
Observed band size: 110 kD