

bsm-51631M

[Primary Antibody]

TPX2 Mouse mAb

BioSS
ANTIBODIES

www.bioss.com.cn

sales@bioss.com.cn

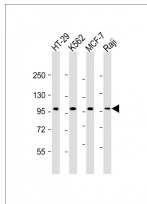
techsupport@bioss.com.cn

400-901-9800

— DATASHEET —

Host: Mouse	Isotype: IgG1, k	Applications: WB (1:500-2000) Reactivity: Human Predicted MW.: 86 kDa Subcellular Location: Cytoplasm ,Nucleus
Clonality: Monoclonal	CloneNo.: C3A12	
GeneID: 22974	SWISS: Q9ULW0	
Target: TPX2		
Purification: affinity purified by Protein G		
Concentration: 1mg/ml		
Storage: 0.01M TBS (pH7.4) with 1% BSA, 0.02% Proclin300 and 50% Glycerol. Shipped at 4°C. Store at -20°C for one year. Avoid repeated freeze/thaw cycles.		
Background: TPX2 is essential for spindle pole and mitotic spindle formulation, playing a role in the S and G2 phases of mitosis. It is also critical for the function of protein kinase Aurora A. TPX2 autophosphorylates Aurora A, targeting it to the spindle apparatus and allowing it to function in eukaryotic meiotic and mitotic cell cycles. TPX2 has also been found to be highly expressed in cancer cells.		

— VALIDATION IMAGES —



Sample: Lane 1: HT-29 cell lysates Lane 2: K562 cell lysates Lane 3: MCF-7 cell lysates Lane 4: Raji cell lysates Primary: Anti-TPX2 (bsm-51631M) at 1/2000 dilution Secondary: IRDye800CW Goat Anti-Mouse IgG at 1/20000 dilution Predicted band size: 86 kD Observed band size: 98 kD