

bsm-51630M**[Primary Antibody]****PFKP Mouse mAb****BioSS**
ANTIBODIES

www.bioss.com.cn

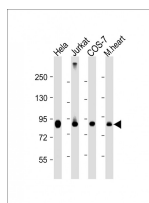
sales@bioss.com.cn

techsupport@bioss.com.cn

400-901-9800

— DATASHEET —

Host: Mouse	Isotype: IgG1, k	Applications: WB (1:500-2000)
Clonality: Monoclonal	CloneNo.: G8D1	Reactivity: Human, Mouse, Monkey
GeneID: 5214	SWISS: Q01813	
Target: PFKP		
Purification: affinity purified by Protein G		
Concentration: 1mg/ml		
Storage: 0.01M TBS (pH7.4) with 1% BSA, 0.02% Proclin300 and 50% Glycerol. Shipped at 4°C. Store at -20°C for one year. Avoid repeated freeze/thaw cycles.		Predicted MW.: 86 kDa
Background: The PFKP gene encodes the platelet isoform of phosphofructokinase (PFK) (ATP:D-fructose-6-phosphate-1-phosphotransferase, EC 2.7.1.11). PFK catalyzes the irreversible conversion of fructose-6-phosphate to fructose-1,6-bisphosphate and is a key regulatory enzyme in glycolysis. The PFKP gene, which maps to chromosome 10p, is also expressed in fibroblasts. See also the muscle (PFKM; MIM 610681) and liver (PFKL; MIM 171860) isoforms of phosphofructokinase, which map to chromosomes 12q13 and 21q22, respectively. Vora (1981) [PubMed 6451249] determined that full tetrameric phosphofructokinase enzyme expressed in platelets can be composed of subunits P4, P3L, and P2L2.[supplied by OMIM, Mar 2008]		Subcellular Location: Cytoplasm

— VALIDATION IMAGES —

Sample: Lane 1: Hela cell lysates Lane 2: Jurkat cell lysates Lane 3: COS-7 cell lysates Lane 4: Mouse heart tissue lysates Primary: Anti-PFKP (bsm-51630M) at 1/4000 dilution Secondary: IRDye800CW Goat Anti-Mouse IgG at 1/20000 dilution Predicted band size: 86 kD Observed band size: 86 kD