

bsm-51622M

[Primary Antibody]

RAB21 Mouse mAb

Bioss
ANTIBODIES

www.bioss.com.cn

sales@bioss.com.cn

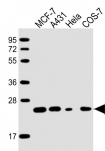
techsupport@bioss.com.cn

400-901-9800

— DATASHEET —

Host: Mouse	Isotype: IgG2b,k	Applications: WB (1:500-2000) Reactivity: Human, African Green Monkey (predicted: Monkey) Predicted MW.: 24 kDa Subcellular Location: Cytoplasm
Clonality: Monoclonal	CloneNo.: G12F4	
GeneID: 23011	SWISS: Q9UL25	
Target: RAB21		
Purification: affinity purified by Protein G		
Concentration: 1mg/ml		
Storage: 0.01M TBS (pH7.4) with 1% BSA, 0.02% Proclin300 and 50% Glycerol. Shipped at 4°C. Store at -20°C for one year. Avoid repeated freeze/thaw cycles.		
Background: This gene belongs to the Rab family of monomeric GTPases, which are involved in the control of cellular membrane traffic. The encoded protein plays a role in the targeted trafficking of integrins via its association with integrin alpha tails. As a consequence, the encoded protein is involved in the regulation of cell adhesion and migration. Expression of this gene is associated with a poor prognosis for glioma patients. This gene is downregulated by the tumor suppressor miR-200b, and miRNA-200b is itself downregulated in glioma tissues. [provided by RefSeq, Nov 2015]		

— VALIDATION IMAGES —



Sample: Lane 1: MCF-7 cell lysates Lane 2: A431 cell lysates Lane 3: HeLa cell lysates Lane 4: COS-7 cell lysates Primary: Anti-RAB21 (bsm-51622M) at 1/2000 dilution Secondary: IRDye800CW Goat Anti-Mouse IgG at 1/20000 dilution Predicted band size: 24 kD Observed band size: 24 kD