

RAB1B Mouse mAb

Catalog Number: bsm-51615M

Target Protein: RAB1B

Concentration: 1mg/ml

Form: Liquid

Host: Mouse

Clonality: Monoclonal

Clone No.: C7D12

Isotype: IgG1,k

Applications: WB (1:500-2000)

Reactivity: Human, Mouse, Rat

Predicted MW: 22 kDa

Entrez Gene: 81876

Swiss Prot: Q9H0U4

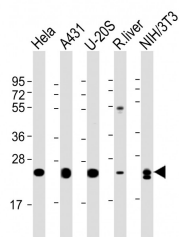
Purification: affinity purified by Protein G

Storage: 0.01M TBS (pH7.4) with 1% BSA, 0.02% Proclin300 and 50% Glycerol.

Shipped at 4°C. Store at -20°C for one year. Avoid repeated freeze/thaw cycles.

Background: Members of the RAB protein family, such as RAB1B, are low molecular mass monomeric GTPases localized on the cytoplasmic surfaces of distinct membrane-bound organelles. RAB1B functions in the early secretory pathway and is essential for vesicle transport between the endoplasmic reticulum (ER) and Golgi (Chen et al., 1997 [PubMed 9030196]; Alvarez et al., 2003 [PubMed 12802079]).[supplied by OMIM, Jan 2009]

VALIDATION IMAGES



Sample: Lane 1: HeLa cell lysates Lane 2: A431 cell lysates Lane 3: U-20S cell lysates Lane 4: Rat liver tissue lysates Lane 5: NIH/3T3 cell lysates Primary: Anti-RAB1B (bsm-51615M) at 1/4000 dilution Secondary: IRDye800CW Goat Anti-Mouse IgG at 1/20000 dilution Predicted band size: 22 kD Observed band size: 25 kD