

## Granuphilin/SYTL4 Rabbit pAb

Catalog Number: bs-16310R

Target Protein: Granuphilin/SYTL4

Concentration: 1mg/ml

Form: Liquid

Host: Rabbit

Clonality: Polyclonal

Isotype: IgG

Applications: IHC-P (1:100-500), IHC-F (1:100-500), IF (1:100-500)

Reactivity: Rat (predicted:Human, Mouse, Rabbit, Sheep, Cow, Dog, Horse)

Predicted MW: 76 kDa

Subcellular: Cell membrane

Locations:

Entrez Gene: 94121

Swiss Prot: Q96C24

Source: KLH conjugated synthetic peptide derived from human Granuphilin/SYTL4: 25-125/671.

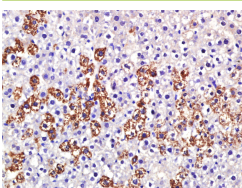
Purification: affinity purified by Protein A

Storage: 0.01M TBS (pH7.4) with 1% BSA, 0.02% Proclin300 and 50% Glycerol.

Shipped at 4°C. Store at -20°C for one year. Avoid repeated freeze/thaw cycles.

**Background:** This gene encodes a member of the synaptotagmin like protein family. Members of this family are characterized by an N-terminal Rab27 binding domain and C-terminal tandem C2 domains. The encoded protein binds specific small Rab GTPases and is involved in intracellular membrane trafficking. This protein binds Rab27 and may be involved in inhibiting dense core vesicle exocytosis. Alternate splicing results in multiple transcript variants that encode the same protein. [provided by RefSeq, Mar 2010]

### VALIDATION IMAGES



Paraformaldehyde-fixed, paraffin embedded (Rat liver); Antigen retrieval by boiling in sodium citrate buffer (pH6.0) for 15min; Block endogenous peroxidase by 3% hydrogen peroxide for 20 minutes; Blocking buffer (normal goat serum) at 37°C for 30min; Antibody incubation with (Granuphilin) Polyclonal Antibody, Unconjugated (bs-16310R) at 1:400 overnight at 4°C, followed by a conjugated secondary (sp-0023) for 20 minutes and DAB staining.

## PRODUCT SPECIFIC PUBLICATIONS

---

[IF=5.511] Song et al. Vaginal Lactobacilli Induce Differentiation of Monocytic Precursors Toward Langerhans-like Cells: in Vitro Evidence. (2018) Front.Immunol. 9:2437 WB ; . 30410487