
CDK5 Mouse mAb

Catalog Number: bsm-51583M

Target Protein: CDK5

Concentration: 1mg/ml

Form: Liquid

Host: Mouse

Clonality: Monoclonal

Clone No.: H11F1

Isotype: IgG1,K

Applications: WB (1:500-1000), IHC-P (1:100-500), IHC-F (1:400-800), IF (1:100-500)

Reactivity: Human, Mouse, Rat

Predicted MW: 32 kDa

Subcellular Cell membrane ,Cytoplasm ,Nucleus

Locations:

Entrez Gene: 1020

Swiss Prot: Q00535

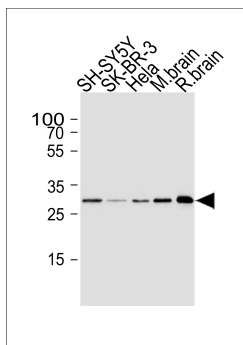
Purification: affinity purified by Protein G

Storage: 0.01M TBS (pH7.4) with 1% BSA, 0.02% Proclin300 and 50% Glycerol.

Shipped at 4°C. Store at -20°C for one year. Avoid repeated freeze/thaw cycles.

Background: This gene encodes a proline-directed serine/threonine kinase that is a member of the cyclin-dependent kinase family of proteins. Unlike other members of the family, the protein encoded by this gene does not directly control cell cycle regulation. Instead the protein, which is predominantly expressed at high levels in mammalian postmitotic central nervous system neurons, functions in diverse processes such as synaptic plasticity and neuronal migration through phosphorylation of proteins required for cytoskeletal organization, endocytosis and exocytosis, and apoptosis. In humans, an allelic variant of the gene that results in undetectable levels of the protein has been associated with lethal autosomal recessive lissencephaly-7. Alternative splicing results in multiple transcript variants.
[provided by RefSeq, May 2015]

VALIDATION IMAGES



Sample: Lane 1: SH-SY5Y cell lysates Lane 2: SK-BR-3 cell lysates Lane 3: HeLa cell lysates Lane 4: Mouse brain tissue lysates Lane 5: Rat brain tissue lysates Primary: Anti-CDK5 (bsm-51582M) at 1/1000 dilution Secondary: IRDye800CW Goat Anti-Mouse IgG at 1/20000 dilution Predicted band size: 32 kD Observed band size: 30 kD