

**bsm-51569M****[ Primary Antibody ]****CREB3L4 Mouse mAb****BioSS**  
**ANTIBODIES**

www.bioss.com.cn

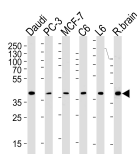
sales@bioss.com.cn

techsupport@bioss.com.cn

400-901-9800

**— DATASHEET —**

<b>Host:</b> Mouse	<b>Isotype:</b> IgG1	<b>Applications:</b> WB (1:500-1000)
<b>Clonality:</b> Monoclonal	<b>CloneNo.:</b> F6H12	
<b>GeneID:</b> 148327		<b>Reactivity:</b> Human, Rat
<b>Target:</b> CREB3L4		
<b>Purification:</b> affinity purified by Protein G		<b>Predicted MW.:</b> 21 kDa
<b>Concentration:</b> 1mg/ml		
<b>Storage:</b> 0.01M TBS (pH7.4) with 1% BSA, 0.02% Proclin300 and 50% Glycerol. Shipped at 4°C. Store at -20°C for one year. Avoid repeated freeze/thaw cycles.		<b>Subcellular Location:</b> Nucleus
<b>Background:</b> This gene encodes a CREB (cAMP responsive element binding) protein with a transmembrane domain which localizes it to the ER membrane. The encoded protein is a transcriptional activator which contains a dimerization domain, and this protein may function in a number of processing pathways including protein processing. Multiple transcript variants encoding different isoforms have been found for this gene. [provided by RefSeq, Dec 2011]		

**— VALIDATION IMAGES —**

Sample: Lane 1: Daudi cell lysates Lane 2: PC-3 cell lysates Lane 3: MCF-7 cell lysates Lane 4: C6 cell lysates Lane 5: L6 cell lysates Lane 6: Rat brain tissue lysates Primary: Anti-CREB3L4 (bsm-51569M) at 1/1000 dilution Secondary: IRDye800CW Goat Anti-Mouse IgG at 1/20000 dilution Predicted band size: 21 kD Observed band size: 40 kD