

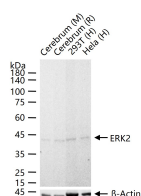
**bsm-51555M****[ Primary Antibody ]****BioSS**  
ANTIBODIES

www.bioss.com.cn

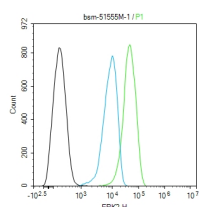
sales@bioss.com.cn

techsupport@bioss.com.cn

400-901-9800

**Erk2 Mouse mAb****— DATASHEET —****Host:** Mouse**Isotype:** IgG1, k**Clonality:** Monoclonal**CloneNo.:** D2F12**GeneID:** 5594**SWISS:** P28482**Target:** Erk2**Immunogen:** KLH conjugated synthetic peptide derived from human Erk2: 101-200/360.**Purification:** affinity purified by Protein G**Concentration:** 1mg/ml**Storage:** 0.01M TBS (pH7.4) with 1% BSA, 0.02% Proclin300 and 50% Glycerol.  
Shipped at 4°C. Store at -20°C for one year. Avoid repeated freeze/thaw cycles.**Background:** The protein encoded by this gene is a member of the MAPkinase family. MAP kinases, also known as extracellular signal-regulated kinases (ERKs), act in a signaling cascade that regulates various cellular processes such as proliferation, differentiation, and cell cycle progression in response to a variety of extracellular signals. This kinase is activated by upstream kinases, resulting in its translocation to the nucleus where it phosphorylates nuclear targets. Alternatively spliced transcript variants encoding different protein isoforms have been described. [provided by RefSeq, Jul 2008].**Applications:** WB (1:500-2000)**Flow-Cyt** (1µg/Test)**Reactivity:** Human, Mouse, Rat  
(predicted: Cow, Xenopus)**Predicted**  
**MW.:** 42 kDa**Subcellular**  
**Location:** Cytoplasm ,Nucleus**— VALIDATION IMAGES —**

25 µg total protein per lane of various lysates (see on figure) probed with ERK2 monoclonal antibody, unconjugated (bsm-51555M) at 1:1000 dilution and 4°C overnight incubation. Followed by conjugated secondary antibody incubation at r.t. for 60 min.



The HeLa (H) cells were fixed with 4% PFA (10 min at r.t.) and then permeabilized with 90% ice-cold methanol for 20 min at -20°C, the cells then were incubated in 5% BSA to block non-specific protein-protein interactions (30 min at r.t.). Primary Antibody (green): Mouse Anti-ERK2 antibody (bsm-51555M): 1 µg/10<sup>6</sup> cells; Secondary Antibody (white blue): Goat anti-Mouse IgG-BF488 (bs-60296G-BF488): 1 µg/test. Blank control (black): PBS. Acquisition of 20,000 events was performed.