

bs-14523R

[Primary Antibody]

EHBP1 Rabbit pAb

Bioss
ANTIBODIES

www.bioss.com.cn

sales@bioss.com.cn

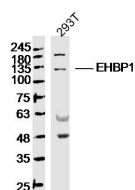
techsupport@bioss.com.cn

400-901-9800

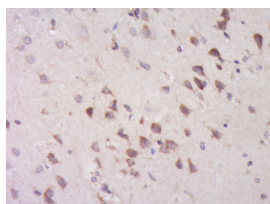
— DATASHEET —

Host: Rabbit	Isotype: IgG	Applications: WB (1:500-2000) IHC-P (1:100-500) IHC-F (1:100-500) IF (1:100-500) Reactivity: Human, Rat (predicted: Mouse, Rabbit, Pig, Sheep, Cow, Dog, Horse) Predicted MW.: 140 kDa Subcellular Location: Cell membrane ,Cytoplasm
Clonality: Polyclonal		
GeneID: 23301	SWISS: Q8NDI1	
Target: EHBP1		
Immunogen: KLH conjugated synthetic peptide derived from human EHBP1: 21-120/1231.		
Purification: affinity purified by Protein A		
Concentration: 1mg/ml		
Storage: 0.01M TBS (pH7.4) with 1% BSA, 0.02% Proclin300 and 50% Glycerol. Shipped at 4°C. Store at -20°C for one year. Avoid repeated freeze/thaw cycles.		
Background: This gene encodes an Eps15 homology domain binding protein. The encoded protein may play a role in endocytic trafficking. A single nucleotide polymorphism in this gene is associated with an aggressive form of prostate cancer. Alternate splicing results in multiple transcript variants. [provided by RefSeq, Feb 2010]		

— VALIDATION IMAGES —



Sample: 293T(Human) Cell Lysate at 40 ug
Primary: Anti-EHBP1 (bs-14523R) at 1/300
dilution Secondary: IRDye800CW Goat Anti-
Rabbit IgG at 1/20000 dilution Predicted band
size: 140 kD Observed band size: 134 kD



Paraformaldehyde-fixed, paraffin embedded
(Rat brain); Antigen retrieval by boiling in
sodium citrate buffer (pH6.0) for 15min; Block
endogenous peroxidase by 3% hydrogen
peroxide for 20 minutes; Blocking buffer (normal
goat serum) at 37°C for 30min; Antibody
incubation with (EHBP1) Polyclonal Antibody,
Unconjugated (bs-14523R) at 1:400 overnight at
4°C, followed by operating according to SP
Kit(Rabbit) (sp-0023) instructions and DAB
staining.