
ITGB2 Mouse mAb

Catalog Number: bsm-51539M

Target Protein: ITGB2

Concentration: 1mg/ml

Form: Liquid

Host: Mouse

Clonality: Monoclonal

Clone No.: N17F2

Isotype: IgG1

Applications: WB (1:500-2000)

Reactivity: Human

Predicted MW: 82 kDa

Entrez Gene: 3689

Swiss Prot: P05107

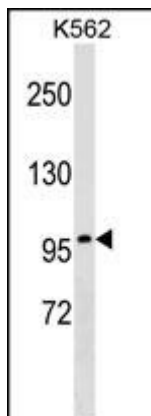
Purification: affinity purified by Protein G

Storage: 0.01M TBS (pH7.4) with 1% BSA, 0.02% Proclin300 and 50% Glycerol.

Shipped at 4°C. Store at -20°C for one year. Avoid repeated freeze/thaw cycles.

Background: The product of this gene belongs to the integrin beta chain family of proteins. Integrins are integral cell-surface proteins composed of an alpha chain and a beta chain. This gene encodes the integrin beta chain beta 2. A given chain may combine with multiple partners resulting in different integrins. For example, beta 2 combines with the alpha L chain to form the integrin LFA-1, and combines with the alpha M chain to form the integrin Mac-1. Integrins are known to participate in cell adhesion as well as cell-surface mediated signalling. Defects in this gene are the cause of leukocyte adhesion deficiency type I (LAD1). Two transcript variants encoding the same protein have been identified for this gene. [provided by RefSeq, Jul 2008].

VALIDATION IMAGES



Sample: Lane 1: K562 cell lysates Primary: Anti-ITGB2 (bsm-51538M) at 1/1000 dilution Secondary: IRDye800CW Goat Anti-Mouse IgG at 1/20000 dilution Predicted band size: 82 kD Observed band size: 100 kD