

**bs-17265R**

**[ Primary Antibody ]**

## SCAMP5 Rabbit pAb

**Bioss**  
ANTIBODIES

www.bioss.com.cn

sales@bioss.com.cn

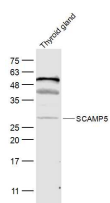
techsupport@bioss.com.cn

400-901-9800

### — DATASHEET —

<b>Host:</b> Rabbit	<b>Isotype:</b> IgG	<b>Applications:</b> WB (1:500-2000)
<b>Clonality:</b> Polyclonal		<b>Reactivity:</b> Mouse (predicted: Human, Rabbit, Pig, Sheep, Cow, Chicken, Dog, Horse)
<b>GeneID:</b> 192683	<b>SWISS:</b> Q8TAC9	
<b>Target:</b> SCAMP5		<b>Predicted MW.:</b> 26 kDa
<b>Immunogen:</b> KLH conjugated synthetic peptide derived from human SCAMP5: 121-220/235. < Cytoplasmic >		<b>Subcellular Location:</b> Cell membrane
<b>Purification:</b> affinity purified by Protein A		
<b>Concentration:</b> 1mg/ml		
<b>Storage:</b> 0.01M TBS (pH7.4) with 1% BSA, 0.02% Proclin300 and 50% Glycerol. Shipped at 4°C. Store at -20°C for one year. Avoid repeated freeze/thaw cycles.		

### — VALIDATION IMAGES —



Sample: Thyroid gland (Mouse) Lysate at 40 ug  
Primary: Anti-SCAMP5 (bs-17265R) at 1/300  
dilution Secondary: IRDye800CW Goat Anti-  
Rabbit IgG at 1/20000 dilution Predicted band  
size: 26 kD Observed band size: 26 kD