

bs-14520R**[Primary Antibody]****EFHD2 Rabbit pAb****BioSS**
ANTIBODIES

www.bioss.com.cn

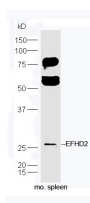
sales@bioss.com.cn

techsupport@bioss.com.cn

400-901-9800

— DATASHEET —

Host: Rabbit	Isotype: IgG	Applications: WB (1:500-2000)
Clonality: Polyclonal		Reactivity: Mouse (predicted: Human, Rat, Pig, Sheep, Cow)
GeneID: 79180	SWISS: Q96C19	
Target: EFHD2		Predicted MW.: 27 kDa
Immunogen: KLH conjugated synthetic peptide derived from human EFHD2: 51-150/240.		Subcellular Location: Cell membrane
Purification: affinity purified by Protein A		
Concentration: 1mg/ml		
Storage: 0.01M TBS (pH7.4) with 1% BSA, 0.02% Proclin300 and 50% Glycerol. Shipped at 4°C. Store at -20°C for one year. Avoid repeated freeze/thaw cycles.		
Background: EFHD2 is a 240 amino acid protein that regulates spontaneous apoptosis through the regulation of Bcl-xS abundance. Localized to membrane raft, Swiprosin-1 is expressed in lymphocytes and contains two EF-hand domains. The gene encoding Swiprosin-1 maps to human chromosome 1, which spans 260 million base pairs, contains over 3,000 genes and comprises nearly 8% of the human genome. Chromosome 1 houses a large number of disease-associated genes, including those that are involved in familial adenomatous polyposis, Stickler syndrome, Parkinson's disease, Gaucher disease, schizophrenia and Usher syndrome. Aberrations in chromosome 1 are found in a variety of cancers, including head and neck cancer, malignant melanoma and multiple myeloma.		

— VALIDATION IMAGES —

Protein: spleen(mouse) lysate at 40ug; Primary: rabbit Anti-EFHD2 (bs-14520R) at 1:300;
Secondary: HRP conjugated Goat-Anti-rabbit IgG(bs-0295G-HRP) at 1: 5000; Predicted band size: 27 kD Observed band size: 27 kD