

**bs-17261R****[ Primary Antibody ]****SCAMP1 Rabbit pAb****Bioss**  
ANTIBODIES

www.bioss.com.cn

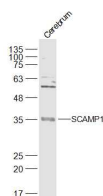
sales@bioss.com.cn

techsupport@bioss.com.cn

400-901-9800

**— DATASHEET —**

<b>Host:</b> Rabbit	<b>Isotype:</b> IgG	<b>Applications:</b> WB (1:500-2000)
<b>Clonality:</b> Polyclonal		<b>Reactivity:</b> Mouse (predicted: Human, Rat, Rabbit, Pig, Cow, Dog, Horse)
<b>GeneID:</b> 9522	<b>SWISS:</b> O15126	<b>Predicted MW.:</b> 38 kDa
<b>Target:</b> SCAMP1		<b>Subcellular Location:</b> Cytoplasm
<b>Immunogen:</b> KLH conjugated synthetic peptide derived from human SCAMP1: 61-160/338.		
<b>Purification:</b> affinity purified by Protein A		
<b>Concentration:</b> 1mg/ml		
<b>Storage:</b> 0.01M TBS (pH7.4) with 1% BSA, 0.02% Proclin300 and 50% Glycerol. Shipped at 4°C. Store at -20°C for one year. Avoid repeated freeze/thaw cycles.		
<b>Background:</b> This gene product belongs to the SCAMP family of proteins, which are secretory carrier membrane proteins. They function as carriers to the cell surface in post-golgi recycling pathways. Different family members are highly related products of distinct genes, and are usually expressed together. These findings suggest that these protein family members may function at the same site during vesicular transport rather than in separate pathways. A pseudogene of this gene has been defined on chromosome 1. Alternative splicing results in multiple transcript variants. [provided by RefSeq, Mar 2014]		

**— VALIDATION IMAGES —**

Sample: Cerebrum (Mouse) Lysate at 40 ug  
Primary: Anti-SCAMP1 (bs-17261R) at 1/500  
dilution Secondary: IRDye800CW Goat Anti-  
Rabbit IgG at 1/20000 dilution Predicted band  
size: 38 kD Observed band size: 38 kD