

bs-22125R**[Primary Antibody]****CDH17 / LI-cadherin Rabbit pAb****BioSS**
ANTIBODIES

www.bioss.com.cn

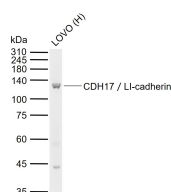
sales@bioss.com.cn

techsupport@bioss.com.cn

400-901-9800

— DATASHEET —

Host: Rabbit	Isotype: IgG	Applications: WB (1:500-2000)
Clonality: Polyclonal		Reactivity: Human (predicted: Mouse, Rat, Cow, Dog, Horse)
GeneID: 1015	SWISS: Q12864	
Target: CDH17 / LI-cadherin		Predicted MW.: 90 kDa
Immunogen: KLH conjugated synthetic peptide derived from human CDH17 / LI-cadherin: 81-180/832. < Extracellular >		Subcellular Location: Cell membrane
Purification: affinity purified by Protein A		
Concentration: 1mg/ml		
Storage: 0.01M TBS (pH7.4) with 1% BSA, 0.02% Proclin300 and 50% Glycerol. Shipped at 4°C. Store at -20°C for one year. Avoid repeated freeze/thaw cycles.		
Background: This gene is a member of the cadherin superfamily, genes encoding calcium-dependent, membrane-associated glycoproteins. The encoded protein is cadherin-like, consisting of an extracellular region, containing 7 cadherin domains, and a transmembrane region but lacking the conserved cytoplasmic domain. The protein is a component of the gastrointestinal tract and pancreatic ducts, acting as an intestinal proton-dependent peptide transporter in the first step in oral absorption of many medically important peptide-based drugs. The protein may also play a role in the morphological organization of liver and intestine. Alternative splicing results in multiple transcript variants. [provided by RefSeq, Jan 2009]		

— VALIDATION IMAGES —

Sample: Lane 1: Human LOVO cell lysates

Primary: Anti-CDH17 / LI-cadherin (bs-22125R)

at 1/1000 dilution Secondary: IRDye800CW Goat

Anti-Rabbit IgG at 1/20000 dilution Predicted

band size: 90 kDa Observed band size: 130 kDa