

**bs-21380R****[ Primary Antibody ]****TRPC6 Rabbit pAb****BioSS**  
**ANTIBODIES**

www.bioss.com.cn

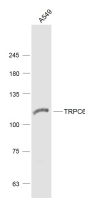
sales@bioss.com.cn

techsupport@bioss.com.cn

400-901-9800

**— DATASHEET —**

<b>Host:</b> Rabbit <b>Clonality:</b> Polyclonal <b>GeneID:</b> 7225 <b>Target:</b> TRPC6 <b>Immunogen:</b> KLH conjugated synthetic peptide derived from human TRPC6: 831-931/931. < Cytoplasmic > <b>Purification:</b> affinity purified by Protein A <b>Concentration:</b> 1mg/ml <b>Storage:</b> 0.01M TBS (pH7.4) with 1% BSA, 0.02% Proclin300 and 50% Glycerol. Shipped at 4°C. Store at -20°C for one year. Avoid repeated freeze/thaw cycles. <b>Background:</b> The protein encoded by this gene forms a receptor-activated calcium channel in the cell membrane. The channel is activated by diacylglycerol and is thought to be under the control of a phosphatidylinositol second messenger system. Activation of this channel occurs independently of protein kinase C and is not triggered by low levels of intracellular calcium. Defects in this gene are a cause of focal segmental glomerulosclerosis 2 (FSGS2). [provided by RefSeq].	<b>Isotype:</b> IgG  <b>SWISS:</b> Q9Y210	<b>Applications:</b> WB (1:500-2000)  <b>Reactivity:</b> Human (predicted: Mouse, Rat, Rabbit)  <b>Predicted MW.:</b> 106 kDa  <b>Subcellular Location:</b> Cell membrane
--	---	---

**— VALIDATION IMAGES —**

Sample: A549(Human) Cell Lysate at 30 ug  
Primary: Anti-TRPC6 (bs-21380R) at 1/1000  
dilution Secondary: IRDye800CW Goat Anti-Rabbit IgG at 1/20000 dilution Predicted band size: 106 kD Observed band size: 106 kD

**— SELECTED CITATIONS —**

- **[IF=5.702]** Song Qiaoli. et al. Neuroprotective Effects of Estrogen Through BDNF-Transient Receptor Potential Channels 6 Signaling Pathway in the Hippocampus in a Rat Model of Perimenopausal Depression. FRONT AGING NEUROSCI. 2022 Jul;0:675 IF ;Rat. 35875795
- **[IF=2.832]** Songchao Xu. et al. Dexmedetomidine Alleviates Neuropathic Pain via the TRPC6-p38 MAPK Pathway in the Dorsal Root Ganglia of Rats. J PAIN RES. 2022; 15: 2437–2448 WB ;Rat. 36016537