

**bs-24270R**

**[ Primary Antibody ]**

## LAMP3 Rabbit pAb

**Bioss**  
ANTIBODIES

www.bioss.com.cn

sales@bioss.com.cn

techsupport@bioss.com.cn

400-901-9800

### DATASHEET

**Host:** Rabbit

**Clonality:** Polyclonal

**Target:** LAMP3

**Immunogen:** KLH conjugated synthetic peptide derived from mouse LAMP3 : 321-411/411.

**Purification:** affinity purified by Protein A

**Concentration:** 1mg/ml

**Storage:** 0.01M TBS (pH7.4) with 1% BSA, 0.02% Proclin300 and 50% Glycerol.  
Shipped at 4°C. Store at -20°C for one year. Avoid repeated freeze/thaw cycles.

**Background:** LAMP3 might change the lysosome function after the transfer of peptide MHC class II molecules to the surface of dendritic cells. It's over expression is associated with an enhanced metastatic potential and may be a prognostic factor for cervical cancer. Expressed in lymphoid organs and dendritic cells and lung. Up regulated in carcinomas of the esophagus, colon, rectum, ureter, stomach, breast, fallopian tube, thyroid and parotid tissues.

**Isotype:** IgG

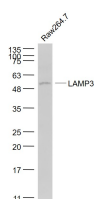
**Applications:** WB (1:500-2000)

**Reactivity:** Mouse (predicted: Rat)

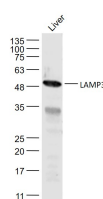
**Predicted MW.:** 44 kDa

**Subcellular Location:** Cytoplasm

### VALIDATION IMAGES



Sample: Raw264.7(Mouse) Cell Lysate at 30 ug  
Primary: Anti- LAMP3 (bs-24270R) at 1/1000  
dilution Secondary: IRDye800CW Goat Anti-  
Rabbit IgG at 1/20000 dilution Predicted band  
size: 44 kD Observed band size: 50 kD



Sample: Liver (Mouse) Lysate at 40 ug Primary:  
Anti-LAMP3 (bs-24270R) at 1/1000 dilution  
Secondary: IRDye800CW Goat Anti-Rabbit IgG at  
1/20000 dilution Predicted band size: 44 kD  
Observed band size: 49 kD