

bs-4226R

[Primary Antibody]

VAPA Rabbit pAb

Bioss
ANTIBODIES

www.bioss.com.cn

sales@bioss.com.cn

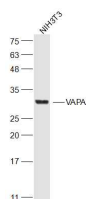
techsupport@bioss.com.cn

400-901-9800

— DATASHEET —

Host: Rabbit	Isotype: IgG	Applications: WB (1:500-2000)
Clonality: Polyclonal		Reactivity: Mouse (predicted: Human, Rat, Rabbit, Cow, Dog)
GeneID: 9218	SWISS: Q9P0L0	
Target: VAPA		Predicted MW.: 28 kDa
Immunogen: KLH conjugated synthetic peptide derived from human VAPA: 101-200/249.		Subcellular Location: Cell membrane ,Cytoplasm
Purification: affinity purified by Protein A		
Concentration: 1mg/ml		
Storage: 0.01M TBS (pH7.4) with 1% BSA, 0.02% Proclin300 and 50% Glycerol. Shipped at 4°C. Store at -20°C for one year. Avoid repeated freeze/thaw cycles.		
Background: VAPA is a type IV membrane protein, present in the plasma membrane, intracellular vesicles and may also be associated with the cytoskeleton. This protein may function in vesicle trafficking, membrane fusion, protein complex assembly and cell motility. Two transcript variants encoding distinct isoforms have been identified.		

— VALIDATION IMAGES —



Sample: NIH/3T3(Mouse) Cell Lysate at 30 ug
Primary: Anti-VAPA (bs-4226R) at 1/300 dilution
Secondary: IRDye800CW Goat Anti-Rabbit IgG at 1/20000 dilution Predicted band size: 28 kD
Observed band size: 28 kD