

---

## MAGEB6 Rabbit pAb

Catalog Number: bs-6825R

Target Protein: MAGEB6

Concentration: 1mg/ml

Form: Liquid

Host: Rabbit

Clonality: Polyclonal

Isotype: IgG

Applications: IHC-P (1:100-500), IHC-F (1:100-500), IF (1:100-500)

Reactivity: Human

Predicted MW: 44 kDa

Entrez Gene: 158809

Swiss Prot: Q8N7X4

Source: KLH conjugated synthetic peptide derived from human MAGEB6: 151-250/407.

Purification: affinity purified by Protein A

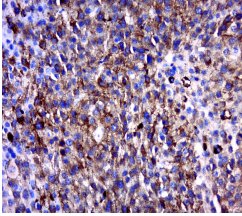
Storage: 0.01M TBS (pH7.4) with 1% BSA, 0.02% Proclin300 and 50% Glycerol.

Shipped at 4°C. Store at -20°C for one year. Avoid repeated freeze/thaw cycles.

**Background:** The melanoma-associated antigen (MAGE) family consists of a number of antigens recognized by cytotoxic T lymphocytes. The MAGE genes were initially isolated from different type of tumors, and based on their virtually exclusive tumor-specific expression in adult tissues, they have been used as targets for cancer immunotherapy. MAGE genes encode for tumor-rejection antigens and are expressed in tumors of different histologic types, but not in normal tissues, with the exception of testis and placenta. Although a large number of MAGE genes have now been identified and extensively studied in tumors of various origin, their function in normal cells remains unknown. MAGE-B6 is expressed in testis and tumors of various histological origins but has not been shown to be expressed in other normal tissues.

### VALIDATION IMAGES

---



Paraformaldehyde-fixed, paraffin embedded (human melanoma tumor); Antigen retrieval by boiling in sodium citrate buffer (pH6.0) for 15min; Block endogenous peroxidase by 3% hydrogen peroxide for 20 minutes; Blocking buffer (normal goat serum) at 37°C for 30min; Antibody incubation with (MAGEB6) Polyclonal Antibody, Unconjugated (bs-6825R) at 1:400 overnight at 4°C, followed by a conjugated secondary (sp-0023) for 20 minutes and DAB staining.