

bs-6750R**[Primary Antibody]****Bioss**
ANTIBODIES

www.bioss.com.cn

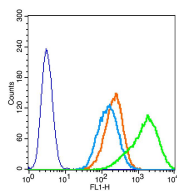
sales@bioss.com.cn

techsupport@bioss.com.cn

400-901-9800

WDR16 Rabbit pAb**— DATASHEET —**

Host: Rabbit	Isotype: IgG	Applications: Flow-Cyt (1ug/Test)
Clonality: Polyclonal		Reactivity: Human (predicted: Mouse, Rat, Pig, Cow, Dog, Horse)
GeneID: 146845	SWISS: Q8N1V2	
Target: WDR16		Predicted MW.: 68 kDa
Immunogen: KLH conjugated synthetic peptide derived from human WDR16: 401-500/620.		Subcellular Location: Cytoplasm
Purification: affinity purified by Protein A		
Concentration: 1mg/ml		
Storage: 0.01M TBS (pH7.4) with 1% BSA, 0.02% Proclin300 and 50% Glycerol. Shipped at 4°C. Store at -20°C for one year. Avoid repeated freeze/thaw cycles.		
Background: WD repeat containing proteins, such as WDR16, play crucial roles in a wide range of physiologic functions, including signal transduction, RNA processing, remodeling the cytoskeleton, regulation of vesicular traffic, and cell division.		

— VALIDATION IMAGES —

The blue histogram is unstained cells(Hepg2).
The Wathet Blue histogram is cells stained with secondary antibody alone. The Orange histogram is cells stained with rabbit IgG isotype control antibody plus secondary antibody. The green histogram is cells stained with Rabbit Anti-WDR16 antibody (bs-6750R) plus secondary antibody, Concentration 1:20

— SELECTED CITATIONS —

- **[IF=3]** Chen, Weixiang, et al. "Identification of chromosomal copy number variations and novel candidate loci in hereditary nonpolyposis colorectal cancer with mismatch repair proficiency." Genomics (2013). Other ;="Human". 23434627