

bs-2517R**[Primary Antibody]****CD72 Rabbit pAb****BioSS**
ANTIBODIES

www.bioss.com.cn

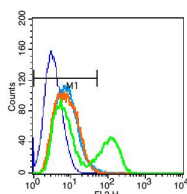
sales@bioss.com.cn

techsupport@bioss.com.cn

400-901-9800

DATASHEET

Host: Rabbit Clonality: Polyclonal GeneID: 971 Target: CD72 Immunogen: KLH conjugated synthetic peptide derived from human CD72: 4-110/359. Purification: affinity purified by Protein A Concentration: 1mg/ml Storage: 0.01M TBS (pH7.4) with 1% BSA, 0.02% Proclin300 and 50% Glycerol. Shipped at 4°C. Store at -20°C for one year. Avoid repeated freeze/thaw cycles. Background: CD72 antigen is a member of the type II integral membrane glycoproteins which includes other related cell surface molecules such as the asialoglycoprotein receptors, CD23 and the Kupffer cell receptor. The function of CD72 is unknown but the exposure of B cells to CD72 antibodies activates a variety of signaling pathways and can induce MHC class II expression and B cell proliferation. CD72 antigen is expressed on all cells of B cell lineage with the exception of plasma cells and weakly on human tissue macrophages.	Isotype: IgG SWISS: P21854	Applications: Flow-Cyt (1µg/Test) Reactivity: Human (predicted: Mouse, Rat, Cow, Dog) Predicted MW.: 40 kDa Subcellular Location: Cell membrane
---	---	--

VALIDATION IMAGES

Blank control(blue):Raji cells (fixed with 2% paraformaldehyde (10 min)) . Primary Antibody:Rabbit Anti- CD72 antibody(bs-2517R), Dilution: 1µg in 100 µL 1X PBS containing 0.5% BSA; Isotype Control Antibody: Rabbit IgG(orange) ,used under the same conditions); Secondary Antibody: Goat anti-rabbit IgG-PE(white blue), Dilution: 1:200 in 1 X PBS containing 0.5% BSA.