

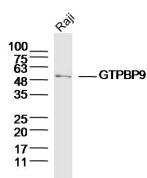
bs-9554R**[Primary Antibody]****GTPBP9 Rabbit pAb****Bioss**
ANTIBODIES

www.bioss.com.cn

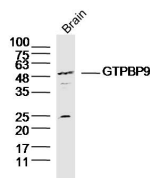
sales@bioss.com.cn

techsupport@bioss.com.cn

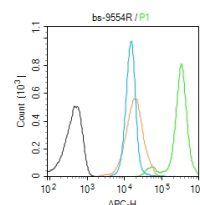
400-901-9800

DATASHEET**Host:** Rabbit**Isotype:** IgG**Clonality:** Polyclonal**GeneID:** 29789**SWISS:** Q9NTK5**Target:** GTPBP9**Immunogen:** KLH conjugated synthetic peptide derived from human GTPBP9: 151-250/396.**Purification:** affinity purified by Protein A**Concentration:** 1mg/ml**Storage:** 0.01M TBS (pH7.4) with 1% BSA, 0.02% Proclin300 and 50% Glycerol.
Shipped at 4°C. Store at -20°C for one year. Avoid repeated freeze/thaw cycles.**Background:** GTP-binding protein 9 is a 396 amino acid protein that belongs to the Obg-related GTPase family under the translation factors (TRAFAC) class. Originally thought to only have GTPase activity, Obg-related GTPase family members have been shown to also have ATPase activity. In Homo sapiens, GTPBP9 exhibits a preference for binding ATP over GTP, with GTP binding occurring only at high nucleotide concentration. One cause for ATP affinity and GTP discrimination is thought to be a substitution of glutamine for a hydrophobic amino acid in Obg-related family members; this is the same substitution that inactivates Ras-like GTPases. GTPBP9 contains a C-terminal TGS domain that binds to ligands and an N-terminal G domain which binds nucleotides. GTPBP9 is expressed as three isoforms produced by alternative splicing.**Applications:** WB (1:500-2000)**Flow-Cyt** (1µg/Test)**Reactivity:** Human, Mouse
(predicted: Rat, Sheep, Cow, Dog, Fruit Fly)**Predicted MW.:** 45 kDa**Subcellular Location:** Cytoplasm ,Nucleus**VALIDATION IMAGES**

Sample: Raji Cell (Human) Lysate at 30 µg
 Primary: Anti-GTPBP9 (bs-9554R) at 1/300 dilution
 Secondary: IRDye800CW Goat Anti-Rabbit IgG at 1/20000 dilution
 Predicted band size: 45kD
 Observed band size: 50kD



Sample: Brain (Mouse) Lysate at 40 µg
 Primary: Anti-GTPBP9 (bs-9554R) at 1/300 dilution
 Secondary: IRDye800CW Goat Anti-Rabbit IgG at 1/20000 dilution
 Predicted band size: 45kD
 Observed band size: 50kD



Blank control (Black line): Molt4 (Black). Primary Antibody (green line): Rabbit Anti-GTPBP9 antibody (bs-9554R) Dilution: 1µg/10⁶ cells; Isotype Control Antibody (orange line): Rabbit IgG. Secondary Antibody (white/blue line): Goat anti-rabbit IgG-AF647 Dilution: 1µg/test. Protocol: The cells were fixed with 4% PFA (10min at room temperature) and then permeabilized with 90% ice-cold methanol for 20 min at room temperature. The cells were then incubated in 5% BSA to block non-specific protein-protein interactions for 30 min at room temperature. Cells stained with Primary Antibody for 30 min at room temperature. The secondary antibody was used for 40 min at room temperature. Acquisition of 20,000 events was performed.