

bs-5556R**[Primary Antibody]****phospho-PAK6 (Ser165) Rabbit pAb****BioSS**
ANTIBODIES

www.bioss.com.cn

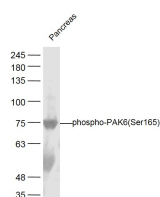
sales@bioss.com.cn

techsupport@bioss.com.cn

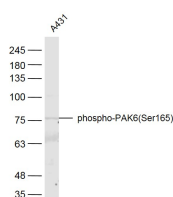
400-901-9800

— DATASHEET —

Host: Rabbit Clonality: Polyclonal GeneID: 56924 Target: PAK6 (Ser165) Immunogen: KLH conjugated Synthesised phosphopeptide derived from human PAK6 around the phosphorylation site of Ser165: PQ(p-S)P. Purification: affinity purified by Protein A Concentration: 1mg/ml Storage: 0.01M TBS (pH7.4) with 1% BSA, 0.02% Proclin300 and 50% Glycerol. Shipped at 4°C. Store at -20°C for one year. Avoid repeated freeze/thaw cycles. Background: This gene encodes a protein that shares a high degree of sequence similarity with p21-activated kinase (PAK) family members. The proteins of this family are Rac/Cdc42-associated Ste20-like Ser/Thr protein kinases, characterized by a highly conserved amino-terminal Cdc42/Rac interactive binding (CRIB) domain and a carboxyl-terminal kinase domain. PAK kinases are implicated in the regulation of a number of cellular processes, including cytoskeleton rearrangement, apoptosis and the MAP kinase signaling pathway. The protein encoded by this gene was found to interact with androgen receptor (AR), which is a steroid hormone-dependent transcription factor that is important for male sexual differentiation and development. The p21-activated protein kinase 6 gene was found to be highly expressed in testis and prostate tissues and the encoded protein was shown to cotranslocate into the nucleus with AR in response to androgen.	Isotype: IgG SWISS: Q9NQY5 Applications: WB (1:500-2000) Reactivity: Human, Mouse (predicted: Rat) Predicted MW.: 75 kDa Subcellular Location: Cytoplasm ,Nucleus
--	--

— VALIDATION IMAGES —

Sample: Pancreas (Mouse) Lysate at 40 ug
 Primary: Anti-phospho-PAK6(Ser165) (bs-5556R)
 at 1/300 dilution Secondary: IRDye800CW Goat
 Anti-Rabbit IgG at 1/20000 dilution Predicted
 band size: 75kD Observed band size: 75 kD



Sample: A431(Human) Cell Lysate at 40 ug
 Primary: Anti-phospho-PAK6(Ser165) (bs-5556R)
 at 1/300 dilution Secondary: IRDye800CW Goat
 Anti-Rabbit IgG at 1/20000 dilution Predicted
 band size: 75kD Observed band size: 75 kD