

bs-0300R**[Primary Antibody]****Mesothelin Rabbit pAb****Bioss**
ANTIBODIES

www.bioss.com.cn

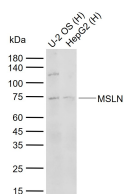
sales@bioss.com.cn

techsupport@bioss.com.cn

400-901-9800

— DATASHEET —

Host: Rabbit	Isotype: IgG	Applications: WB (1:500-2000) ELISA (1:5000-10000)
Clonality: Polyclonal		
GeneID: 10232	SWISS: Q13421	Reactivity: Human (predicted: Mouse, Rat)
Target: Mesothelin		
Immunogen: KLH conjugated synthetic peptide derived from human Mesothelin: 101-200/630.		
Purification: affinity purified by Protein A		Predicted MW.: 64 kDa
Concentration: 1mg/ml		Subcellular Location: Secreted ,Cell membrane
Storage: 0.01M TBS (pH7.4) with 1% BSA, 0.02% Proclin300 and 50% Glycerol. Shipped at 4°C. Store at -20°C for one year. Avoid repeated freeze/thaw cycles.		
Background: Mesothelin(MSLN)may play a role in cell adhesion and cell shape dynamics; human homolog highly expressed in renal cell carcinoma. malignant tumors, such as a skin lump, ovary cancer and the pancreas cancer...etc..Mainly used for the research of the malignant tumor.		

— VALIDATION IMAGES —

Sample: Lane 1: Human U-2 OS cell lysates Lane
2: Human HepG2 cell lysates Primary: Anti-MSLN
(bs-0300R) at 1/1000 dilution Secondary:
IRDye800CW Goat Anti-Rabbit IgG at 1/20000
dilution Predicted band size: 64 kDa Observed
band size: 73 kDa

— SELECTED CITATIONS —

- **[IF=34.9]** Zhao Zhipeng. et al. A collagenase nanogel backpack improves CAR-T cell therapy outcomes in pancreatic cancer. NAT NANOTECHNOL. 2025 May;;1-11 FC ;Human. 40389641