

bs-18936R**[Primary Antibody]****MICALL2/JRAB Rabbit pAb****BioSS**
ANTIBODIES

www.bioss.com.cn

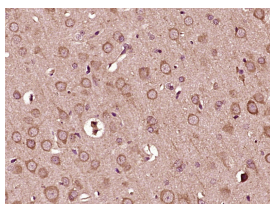
sales@bioss.com.cn

techsupport@bioss.com.cn

400-901-9800

— DATASHEET —

<p>Host: Rabbit</p> <p>Clonality: Polyclonal</p> <p>GeneID: 79778</p> <p>Target: MICALL2/JRAB</p> <p>Immunogen: KLH conjugated synthetic peptide derived from human MICALL2/JRAB: 741-840/904.</p> <p>Purification: affinity purified by Protein A</p> <p>Concentration: 1mg/ml</p> <p>Storage: 0.01M TBS (pH7.4) with 1% BSA, 0.02% Proclin300 and 50% Glycerol. Shipped at 4°C. Store at -20°C for one year. Avoid repeated freeze/thaw cycles.</p> <p>Background: JRAB is a 904 amino acid protein with one CH (calponin-homology) domain and one LIM zinc-binding domain. JRAB has been shown to interact with Rab13 and Rab8 to facilitate cellular transport of claudin-1, occludin, and E-cadherin. This interaction is vital for the coordination of the assembly of tight junctions (TJs) and adherens junctions (AJs). Dynamic turnover (endocytic recycling) of cell-to-cell AJs and TJs is essential for epithelial morphogenesis during normal development and differentiation. The endocytic recycling of occludin and claudin proteins is part of an ongoing process of restructuring and maintaining cell junctions, especially at TJs. JRAB and Rab13 have also been implicated in the carcinoma metastasis event of epithelial cell scattering. This event shows Rab13 and JRAB colocalizing with F-Actin in lamellipodial structures prior to cell scattering.</p>	<p>Isotype: IgG</p> <p>SWISS: Q8IY33</p> <p>Applications: IHC-P (1:100-500) IHC-F (1:100-500) IF (1:100-500)</p> <p>Reactivity: Rat (predicted: Human, Mouse)</p> <p>Predicted MW.: 55 kDa</p> <p>Subcellular Location: Cell membrane ,Cytoplasm</p>
--	---

— VALIDATION IMAGES —

Paraformaldehyde-fixed, paraffin embedded (rat brain tissue); Antigen retrieval by boiling in sodium citrate buffer (pH6.0) for 15min; Block endogenous peroxidase by 3% hydrogen peroxide for 20 minutes; Blocking buffer (normal goat serum) at 37°C for 30min; Antibody incubation with (MICALL2) Polyclonal Antibody, Unconjugated (bs-18936R) at 1:400 overnight at 4°C, followed by operating according to SP Kit(Rabbit) (sp-0023) instructions and DAB staining.