

bs-22346R**[Primary Antibody]****GDNFRA Rabbit pAb****BioSS**
ANTIBODIES

www.bioss.com.cn

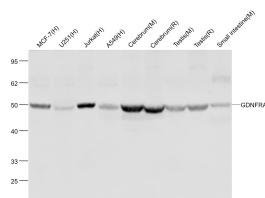
sales@bioss.com.cn

techsupport@bioss.com.cn

400-901-9800

DATASHEET

Host: Rabbit	Isotype: IgG	Applications: WB (1:500-2000)
Clonality: Polyclonal		Reactivity: Human, Mouse, Rat (predicted: Rabbit, Pig, Cow, Chicken, Dog)
GeneID: 2674	SWISS: P56159	Predicted MW.: 44 kDa
Target: GDNFRA		Subcellular Location: Cell membrane
Immunogen: KLH conjugated synthetic peptide derived from human GDNFRA: 81-180/465.		
Purification: affinity purified by Protein A		
Concentration: 1mg/ml		
Storage: 0.01M TBS (pH7.4) with 1% BSA, 0.02% Proclin300 and 50% Glycerol. Shipped at 4°C. Store at -20°C for one year. Avoid repeated freeze/thaw cycles.		
Background: Glial cell line-derived neurotrophic factor (GDNF) and neurturin (NTN) are two structurally related, potent neurotrophic factors that play key roles in the control of neuron survival and differentiation. The protein encoded by this gene is a member of the GDNF receptor family. It is a glycosylphosphatidylinositol(GPI)-linked cell surface receptor for both GDNF and NTN, and mediates activation of the RET tyrosine kinase receptor. This gene is a candidate gene for Hirschsprung disease. Multiple alternatively spliced transcript variants have been described for this gene. [provided by RefSeq]		

VALIDATION IMAGES

Sample: MCF-7 (Human) Cell Lysate at 30 ug
 U251 (Human) Cell Lysate at 30 ug Jurkat
 (Human) Cell Lysate at 30 ug A549 (Human) Cell
 Lysate at 30 ug Cerebrum (Mouse) Lysate at 40
 ug Cerebrum (Rat) Lysate at 40 ug Testis (Mouse)
 Lysate at 40 ug Testis (Rat) Lysate at 40 ug Small
 intestine (Mouse) Lysate at 40 ug Primary: Anti-
 GDNFRA (bs-22346R) at 1/1000 dilution
 Secondary: IRDye800CW Goat Anti-Rabbit IgG at
 1/20000 dilution Predicted band size: 51 kD
 Observed band size: 51 kD