

bs-22341R**[Primary Antibody]****SP-B/Surfactant Protein B Rabbit pAb****BioSS**
ANTIBODIES

www.bioss.com.cn

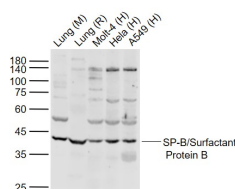
sales@bioss.com.cn

techsupport@bioss.com.cn

400-901-9800

DATASHEET

Host: Rabbit	Isotype: IgG	Applications: WB (1:500-2000)
Clonality: Polyclonal		
GeneID: 20388	SWISS: P50405	
Target: SP-B/Surfactant Protein B		
Immunogen: KLH conjugated synthetic peptide derived from mouse SP-B: 141-240/377.		
Purification: affinity purified by Protein A		Reactivity: Human, Mouse, Rat
Concentration: 1mg/ml		
Storage: 0.01M TBS (pH7.4) with 1% BSA, 0.02% Proclin300 and 50% Glycerol. Shipped at 4°C. Store at -20°C for one year. Avoid repeated freeze/thaw cycles.		
Background: Pulmonary surfactant-associated proteins promote alveolar stability by lowering the surface tension at the air-liquid interface in the peripheral air spaces. SP-B increases the collapse pressure of palmitic acid to nearly 70 millinewtons per meter. Homodimer; disulfide-linked. Secreted, extracellular space. Function : Pulmonary surfactant-associated proteins promote alveolar stability by lowering the surface tension at the air-liquid interface in the peripheral air spaces. SP-B increases the collapse pressure of palmitic acid to nearly 70 millinewtons per meter.		Predicted MW.: 41 kDa
		Subcellular Location: Secreted

VALIDATION IMAGES

Sample: Lane 1: Lung (Mouse) Lysate at 40 ug
Lane 2: Lung (Rat) Lysate at 40 ug Lane 3: Molt-4
(Human) Cell Lysate at 30 ug Lane 4: HeLa
(Human) Cell Lysate at 30 ug Lane 5: A549
(Human) Cell Lysate at 30 ug Primary: Anti-SP-
B/Surfactant Protein B (bs-22341R) at 1/1000
dilution Secondary: IRDye800CW Goat Anti-
Rabbit IgG at 1/20000 dilution Predicted band
size: 42 kD Observed band size: 42 kD

SELECTED CITATIONS

- **[IF=4.8]** Hao Zuo. et al. CCDC59 alleviates bleomycin-induced inflammation and pulmonary fibrosis by increasing SP-B and SP-C expression in mice. INT IMMUNOPHARMACOL. 2024 Sep;138:112645 WB ;Mouse. 38972208