

C5orf20 Rabbit pAb

Catalog Number: bs-15199R

Target Protein: C5orf20

Concentration: 1mg/ml

Form: Liquid

Host: Rabbit

Clonality: Polyclonal

Isotype: IgG

Applications: WB (1:500-2000)

Reactivity: Mouse (predicted:Human)

Predicted MW: 27 kDa

Subcellular Nucleus

Locations:

Entrez Gene: 140947

Swiss Prot: Q8TF63.1

Source: KLH conjugated synthetic peptide derived from human C5orf20 : 131-244/244.

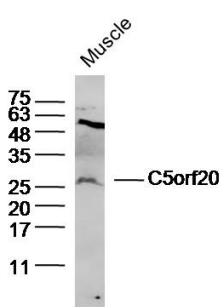
Purification: affinity purified by Protein A

Storage: 0.01M TBS (pH7.4) with 1% BSA, 0.02% Proclin300 and 50% Glycerol.

Shipped at 4°C. Store at -20°C for one year. Avoid repeated freeze/thaw cycles.

Background: C5orf20 is a intronless gene is specifically expressed in dendritic cells (DCs), which are potent antigen-presenting cells involved in activating naive T cells to initiate antigen-specific immune response. The encoded protein is localized mainly in the perinucleus. One of the alleles (A/T) of this gene, that causes premature translation termination at aa 117, has been associated with an increased prevalence of major depression in humans

VALIDATION IMAGES



Sample: Muscle (Mouse) Lysate at 40 ug Primary: Anti-C5orf20(bs-15199R) at 1/300 dilution Secondary: IRDye800CW Goat Anti-Rabbit IgG at 1/20000 dilution Predicted band size: 27kD Observed band size: 27kD