

bs-22322R**[Primary Antibody]****GASC1/KDM4C Rabbit pAb****Bioss**
ANTIBODIES

www.bioss.com.cn

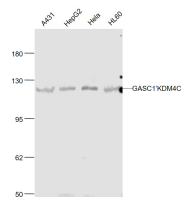
sales@bioss.com.cn

techsupport@bioss.com.cn

400-901-9800

— DATASHEET —

Host: Rabbit	Isotype: IgG	Applications: WB (1:500-2000)
Clonality: Polyclonal		Reactivity: Human (predicted: Mouse, Rat, Rabbit, Pig, Cow, Dog, Horse)
GeneID: 23081	SWISS: Q9H3R0	
Target: GASC1/KDM4C		Predicted MW.: 120 kDa
Immunogen: KLH conjugated synthetic peptide derived from human GASC1/KDM4C: 291-390/1056.		Subcellular Location: Nucleus
Purification: affinity purified by Protein A		
Concentration: 1mg/ml		
Storage: 0.01M TBS (pH7.4) with 1% BSA, 0.02% Proclin300 and 50% Glycerol. Shipped at 4°C. Store at -20°C for one year. Avoid repeated freeze/thaw cycles.		
Background: KDM4C/JMJD2C, a jumonji domain containing protein, is a histone demethylase. JMJD2C specifically demethylates Lysine 9 and Lysine 36 residues of Histone H3, thereby playing a central role in regulating histone modifications.		

— VALIDATION IMAGES —

Sample: A431 (Human) Cell Lysate at 30 ug
HepG2 (Human) Cell Lysate at 30 ug
Hela (Human) Cell Lysate at 30 ug
HL60 (Human) Cell Lysate at 30 ug
Primary: Anti- GASC1/KDM4C (bs-22322R) at 1/1000 dilution
Secondary: IRDye800CW Goat Anti-Rabbit IgG at 1/20000 dilution
Predicted band size: 100/120 kD
Observed band size: 120 kD