

bs-6848R**[Primary Antibody]****FSCN1 Rabbit pAb****Bioss**
ANTIBODIES

www.bioss.com.cn

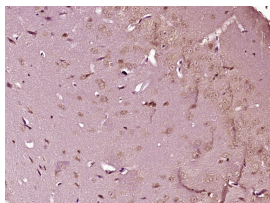
sales@bioss.com.cn

techsupport@bioss.com.cn

400-901-9800

DATASHEET

Host: Rabbit	Isotype: IgG	Applications: IHC-P (1:100-500) IHC-F (1:100-500) IF (1:100-500) Reactivity: Mouse (predicted: Human, Rat, Dog) Predicted MW.: 55 kDa Subcellular Location: Cytoplasm
Clonality: Polyclonal		
GeneID: 6624	SWISS: Q16658	
Target: FSCN1		
Immunogen: KLH conjugated synthetic peptide derived from human FSCN1: 401-493/493.		
Purification: affinity purified by Protein A		
Concentration: 1mg/ml		
Storage: 0.01M TBS (pH7.4) with 1% BSA, 0.02% Proclin300 and 50% Glycerol. Shipped at 4°C. Store at -20°C for one year. Avoid repeated freeze/thaw cycles.		
Background: Human fascin is a highly conserved actin-bundling protein. Fascin, encoded by the human homolog for sn (hsn) gene, has been localized to microspikes and stress fibers of cultured cells where it is thought to be involved in the formation of microfilament bundles. It is expressed predominantly in dendritic cells. Lymphoid cells, myeloid cells and plasma cells are negative. However, Reed Sternberg cells in Hodgkin's lymphoma are positive for fascin staining. Epstein-Barr virus may induce expression of fascin in B cells.		

VALIDATION IMAGES

Paraformaldehyde-fixed, paraffin embedded (Mouse brain); Antigen retrieval by boiling in sodium citrate buffer (pH6.0) for 15min; Block endogenous peroxidase by 3% hydrogen peroxide for 20 minutes; Blocking buffer (normal goat serum) at 37°C for 30min; Antibody incubation with (Fascin) Polyclonal Antibody, Unconjugated (bs-6848R) at 1:400 overnight at 4°C, followed by operating according to SP Kit(Rabbit) (sp-0023) instructions and DAB staining.

SELECTED CITATIONS

- **[IF=3.91]** Dong, Wei-tao, et al. "iTRAQ proteomic analysis of the interactions between Bombyx mori nuclear polyhedrosis virus and silkworm." Journal of Proteomics (2017). WB ;="Other Species". 28755911