

**bs-1093R****[ Primary Antibody ]****BioSS**  
**ANTIBODIES**

www.bioss.com.cn

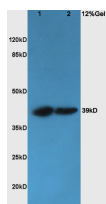
sales@bioss.com.cn

techsupport@bioss.com.cn

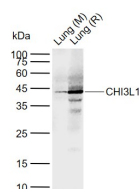
400-901-9800

**CHI3L1 Rabbit pAb****DATASHEET**

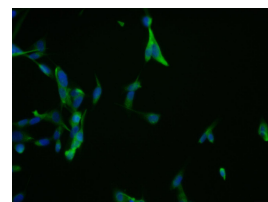
<b>Host:</b> Rabbit <b>Clonality:</b> Polyclonal <b>GeneID:</b> 89824 <b>Target:</b> CHI3L1 <b>Immunogen:</b> KLH conjugated synthetic peptide derived from rat CHI3L1: 330-381/381. <b>Purification:</b> affinity purified by Protein A <b>Concentration:</b> 1mg/ml <b>Storage:</b> 0.01M TBS (pH7.4) with 1% BSA, 0.02% Proclin300 and 50% Glycerol. Shipped at 4°C. Store at -20°C for one year. Avoid repeated freeze/thaw cycles. <b>Background:</b> Chitinases catalyze the hydrolysis of chitin, which is an abundant glycopolymer found in insect exoskeletons and fungal cell walls. The glycoside hydrolase 18 family of chitinases includes eight human family members. This gene encodes a glycoprotein member of the glycosyl hydrolase 18 family. The protein lacks chitinase activity and is secreted by activated macrophages, chondrocytes, neutrophils and synovial cells. The protein is thought to play a role in the process of inflammation and tissue remodeling. [provided by RefSeq, Sep 2009]	<b>Isotype:</b> IgG <b>SWISS:</b> Q9WTV1	<b>Applications:</b> <b>WB</b> (1:500-2000) <b>ICC/IF</b> (1:100-500) <b>Reactivity:</b> Human, Mouse, Rat  <b>Predicted MW.:</b> 42 kDa <b>Subcellular Location:</b> Secreted ,Extracellular matrix
---	---	---

**VALIDATION IMAGES**

Protein: Liver(Rat) lysates at 30ug; Colon carcinoma(Human) lysates at 30ug; Primary: Anti-CGP-39/CHI3L1/YKL-40 (bs-1093R) at 1:200; Secondary: HRP conjugated Goat Anti-Rabbit IgG(bs-0295G-HRP) at 1: 3000; Predicted band size : 42kD Observed band size : 39kD



Sample: Lane 1: Mouse Lung tissue lysates Lane 2: Rat Lung tissue lysates Primary: Anti-CHI3L1 (bs-1093R) at 1/1000 dilution Secondary: IRDye800CW Goat Anti-Rabbit IgG at 1/20000 dilution Predicted band size: 42 kDa Observed band size: 42 kDa



U87MG cell; 4% Paraformaldehyde-fixed; Triton X-100 at room temperature for 20 min; Blocking buffer (normal goat serum, C-0005) at 37°C for 20 min; Antibody incubation with (CHI3L1) polyclonal Antibody, Unconjugated (bs-1093R) 1:100, 90 minutes at 37°C; followed by a conjugated Goat Anti-Rabbit IgG antibody at 37°C for 90 minutes, DAPI (blue, C02-04002) was used to stain the cell nuclei.

**SELECTED CITATIONS**

- **[IF=16.494]** Wang et al. Clara cell 10-kD protein suppresses chitinase 3-like 1 expression associated with eosinophilic chronic rhinosinusitis. (2010) Am.J.Respir.Crit.Care.Med. 181:908-16 IHC ;Mouse&Human. 20093645
- **[IF=5.7]** Bo Bao. et al. Excessive Supplement of l-Arginine Induces Myopia via Orchestrating the MEK-ERK-NO Signaling Pathway. J AGR FOOD CHEM. 2024;XXXX(XXX):XXX-XXX WB ;Guinea pig. 39535109
- **[IF=6.1]** Li Yihui. et al. Inhibition of CHI3L1 attenuates excessive autophagy in intestinal epithelial cells to reduce the severity of necrotizing enterocolitis. CELL DEATH DISCOV. 2025 Apr;11(1):1-12 WB,IHC ;Human,Mouse. 40188090
- **[IF=2.5]** Lihua Zhang. et al. miR-6722-3p improves sepsis-induced acute kidney injury by targeting CHI3L1. TISSUE CELL. 2025 May;;103002 WB ;Rat. 40517727

Important Note: This product as supplied is intended for research use only, not for use in human, therapeutic or diagnostic applications.

- **[IF=3.41]** Tanaka, Yuki, et al. "Antigen - specific overexpression of human cartilage glycoprotein 39 on CD4+ CD25+ Foxp3+ Treg cells in the generation of glucose - 6 - phosphate isomerase induced arthritis." Clinical & Experimental Immunology (2014). Other ;Mouse. 24730590