

bs-21401R**[Primary Antibody]****VLDL Receptor Rabbit pAb****BioSS**
ANTIBODIES

www.bioss.com.cn

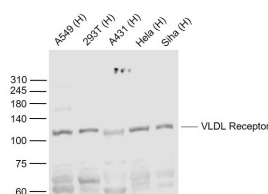
sales@bioss.com.cn

techsupport@bioss.com.cn

400-901-9800

— DATASHEET —

Host: Rabbit	Isotype: IgG	Applications: WB (1:500-2000)
Clonality: Polyclonal		Reactivity: Human (predicted: Mouse, Rat, Rabbit, Pig, Dog, Horse)
GeneID: 7436	SWISS: P98155	
Target: VLDL Receptor		
Immunogen: KLH conjugated synthetic peptide derived from human VLDL Receptor : 501-600/873. < Extracellular >		Predicted MW.: 93 kDa
Concentration: 1mg/ml		Subcellular Location: Cell membrane
Storage: 0.01M TBS (pH7.4) with 1% BSA, 0.02% Proclin300 and 50% Glycerol. Shipped at 4°C. Store at -20°C for one year. Avoid repeated freeze/thaw cycles.		
Background: VLDL (very low density lipoprotein) cholesterol is one of the three major types of cholesterol found in blood. VLDL receptor plays an essential role in triglyceride metabolism. It binds VLDL and transports it into cells by endocytosis. In order to be internalized, the receptor-ligand complexes must first cluster into clathrin coated pits. Binding to Reelin induces tyrosine phosphorylation of Dab1 and modulation of Tau phosphorylation.		

— VALIDATION IMAGES —

Sample: Lane 1: A549 (Human) Cell Lysate at 30 ug
 Lane 2: 293T (Human) Cell Lysate at 30 ug
 Lane 3: A431 (Human) Cell Lysate at 30 ug
 Lane 4: Hela (Human) Cell Lysate at 30 ug
 Lane 5: SiHa (Human) Cell Lysate at 30 ug
 Primary: Anti-VLDL Receptor (bs-21401R) at 1/1000 dilution
 Secondary: IRDye800CW Goat Anti-Rabbit IgG at 1/20000 dilution
 Predicted band size: 120 kD
 Observed band size: 120 kD