

**bs-21385R****[ Primary Antibody ]****RSPO1 Rabbit pAb****BioSS**  
**ANTIBODIES**

www.bioss.com.cn

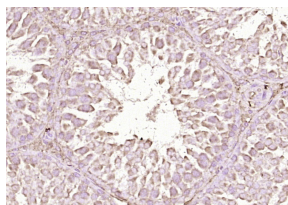
sales@bioss.com.cn

techsupport@bioss.com.cn

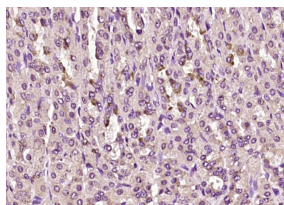
400-901-9800

**— DATASHEET —**

<b>Host:</b> Rabbit	<b>Isotype:</b> IgG	<b>Applications:</b> <b>IHC-P</b> (1:100-500) <b>IHC-F</b> (1:100-500) <b>IF</b> (1:100-500)
<b>Clonality:</b> Polyclonal		
<b>GeneID:</b> 284654	<b>SWISS:</b> Q2MKA7	
<b>Target:</b> RSPO1		<b>Reactivity:</b> Rat (predicted: Human, Mouse, Rabbit, Pig, Sheep, Cow, Dog, Horse)
<b>Immunogen:</b> KLH conjugated synthetic peptide derived from human RSPO1: 31-1306/263.		
<b>Concentration:</b> 1mg/ml		<b>Predicted MW.:</b> 27 kDa
<b>Storage:</b> 0.01M TBS (pH7.4) with 1% BSA, 0.02% Proclin300 and 50% Glycerol. Shipped at 4°C. Store at -20°C for one year. Avoid repeated freeze/thaw cycles.		<b>Subcellular Location:</b> Secreted
<b>Background:</b> RSPO1 is a member of the R-spondin family and encodes a secreted activator protein with two cystein-rich, furin-like domains and one thrombospondin type 1 domain. In mice, the protein induces the rapid onset of crypt cell proliferation and increases intestinal epithelial healing, providing a protective effect against chemotherapy-induced adverse effects.		

**— VALIDATION IMAGES —**

Paraformaldehyde-fixed, paraffin embedded (rat testis tissue); Antigen retrieval by boiling in sodium citrate buffer (pH6.0) for 15min; Block endogenous peroxidase by 3% hydrogen peroxide for 20 minutes; Blocking buffer (normal goat serum) at 37°C for 30min; Antibody incubation with (RSPO1) Polyclonal Antibody, Unconjugated (bs-21385R) at 1:200 overnight at 4°C, followed by operating according to SP Kit(Rabbit) (sp-0023) instructions and DAB staining.



Paraformaldehyde-fixed, paraffin embedded (rat stomach tissue); Antigen retrieval by boiling in sodium citrate buffer (pH6.0) for 15min; Block endogenous peroxidase by 3% hydrogen peroxide for 20 minutes; Blocking buffer (normal goat serum) at 37°C for 30min; Antibody incubation with (RSPO1) Polyclonal Antibody, Unconjugated (bs-21385R) at 1:200 overnight at 4°C, followed by operating according to SP Kit(Rabbit) (sp-0023) instructions and DAB staining.

**— SELECTED CITATIONS —**

- **[IF=5.7]** Jinmiao Tian. et al. QPH-FR: A Novel Quinoa Peptide Enhances Chemosensitivity by Targeting Leucine-Rich Repeat-Containing G Protein-Coupled Receptor 5 in Colorectal Cancer. J AGR FOOD CHEM. 2024;XXXX(XXX):XXX-XXX WB ;Human. 39047262