

bs-21382R**[Primary Antibody]****SV2A Rabbit pAb****Bioss**
ANTIBODIES

www.bioss.com.cn

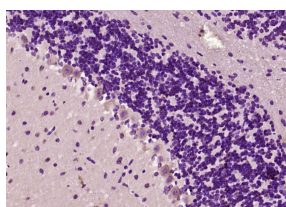
sales@bioss.com.cn

techsupport@bioss.com.cn

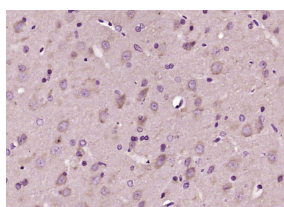
400-901-9800

— DATASHEET —

Host: Rabbit	Isotype: IgG	Applications: IHC-P (1:100-500)
Clonality: Polyclonal		IHC-F (1:100-500)
GeneID: 9900	SWISS: Q7L0J3	IF (1:100-500)
Target: SV2A		Reactivity: Mouse, Rat (predicted: Human, Pig, Cow, Dog, Horse)
Immunogen: KLH conjugated synthetic peptide derived from human SV2A: 621-720/742. < Cytoplasmic >		Predicted MW.: 83 kDa
Purification: affinity purified by Protein A		Subcellular Location: Cell membrane ,Cytoplasm
Concentration: 1mg/ml		
Storage: 0.01M TBS (pH7.4) with 1% BSA, 0.02% Proclin300 and 50% Glycerol. Shipped at 4°C. Store at -20°C for one year. Avoid repeated freeze/thaw cycles.		
Background: SV2s (Synaptic Vesicle protein 2) are integral membrane glycoproteins present in all synaptic vesicles. They have 12 transmembrane domains predicted by sequence analysis. There are three characterized isoforms, SV2A, SV2B and SV2C. SV2A is expressed ubiquitously throughout the brain. SV2B has a more restricted distribution with varying degrees of coexpression with SV2A. SV2C is more closely related to SV2A but shows a very restricted expression pattern. The highest expression levels were observed in phylogenetically old brain areas like pallidum, the midbrain and the olfactory bulb. SV2A is probably involved in the maintenance of a pool of synaptic vesicles competent for calcium- stimulated exocytosis. SV2A is a highly glycosylated synaptic vesicle protein with homology to transmembrane transporters.		

— VALIDATION IMAGES —

Paraformaldehyde-fixed, paraffin embedded (mouse cerebellum tissue); Antigen retrieval by boiling in sodium citrate buffer (pH6.0) for 15min; Block endogenous peroxidase by 3% hydrogen peroxide for 20 minutes; Blocking buffer (normal goat serum) at 37°C for 30min; Antibody incubation with (SV2A) Polyclonal Antibody, Unconjugated (bs-21382R) at 1:200 overnight at 4°C, followed by operating according to SP Kit(Rabbit) (sp-0023) instructions and DAB staining.



Paraformaldehyde-fixed, paraffin embedded (rat brain tissue); Antigen retrieval by boiling in sodium citrate buffer (pH6.0) for 15min; Block endogenous peroxidase by 3% hydrogen peroxide for 20 minutes; Blocking buffer (normal goat serum) at 37°C for 30min; Antibody incubation with (SV2A) Polyclonal Antibody, Unconjugated (bs-21382R) at 1:200 overnight at 4°C, followed by operating according to SP Kit(Rabbit) (sp-0023) instructions and DAB staining.

— SELECTED CITATIONS —

- **[IF=7.9]** Xiaoling Wang. et al.Synaptic vesicle glycoprotein 2 A in serum is an ideal biomarker for early diagnosis of Alzheimer's disease.Alzheimer's Research &Therapy.2024 Apr 13;16(1):82. Simoa assay for SV2A detection ;Human. 10.1186/s13195-024-01440-9
- **[IF=4.6]** Wang Yu. et al. BI1 Activates Autophagy and Mediates TDP43 to Regulate ALS Pathogenesis. MOL NEUROBIOL.

Important Note: This product as supplied is intended for research use only, not for use in human, therapeutic or diagnostic applications.

2024 Jul;:1-43 IF ;Mouse. 38954254