

bs-24262R**[Primary Antibody]****GPR55 Rabbit pAb****BioSS**
ANTIBODIES

www.bioss.com.cn

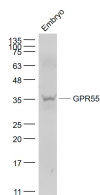
sales@bioss.com.cn

techsupport@bioss.com.cn

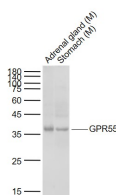
400-901-9800

— DATASHEET —

Host: Rabbit	Isotype: IgG	Applications: WB (1:500-2000)
Clonality: Polyclonal		Reactivity: Mouse
Target: GPR55		
Immunogen: KLH conjugated synthetic peptide derived from mouse CD69 : 302-313/327. < Cytoplasmic >		Predicted MW.: 37 kDa
Purification: affinity purified by Protein A		Subcellular Location: Cell membrane
Concentration: 1mg/ml		
Storage: 0.01M TBS (pH7.4) with 1% BSA, 0.02% Proclin300 and 50% Glycerol. Shipped at 4°C. Store at -20°C for one year. Avoid repeated freeze/thaw cycles.		
Background: G protein-coupled receptors (GPCRs, or GPRs) contain 7 transmembrane domains and transduce extracellular signals through heterotrimeric G proteins. GPCR GPR55 is a member of this family (subfamily Orphan-A). It has been reported to be expressed in the brain, where mRNA transcripts were detected in the caudate nucleus and putamen, but not detected in the hippocampus, thalamus, pons cerebellum, frontal cortex of the brain. ESTs have been isolated from liver/spleen libraries.		

— VALIDATION IMAGES —

Sample: Embryo(Mouse) Lysate at 40 ug Primary: Anti- GPR55 (bs-24262R) at 1/1000 dilution
Secondary: IRDye800CW Goat Anti-Rabbit IgG at 1/20000 dilution Predicted band size: 37 kD
Observed band size: 37 kD



Sample: Lane 1: Mouse Adrenal gland tissue lysates Lane 2: Mouse Stomach tissue lysates
Primary: Anti-GPR55 (bs-24262R) at 1/1000 dilution Secondary: IRDye800CW Goat Anti-Rabbit IgG at 1/20000 dilution Predicted band size: 37 kD Observed band size: 37 kD