

bs-5719R

[Primary Antibody]

PTPIP51 Rabbit pAb

Bioss
ANTIBODIES

www.bioss.com.cn

sales@bioss.com.cn

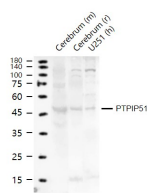
techsupport@bioss.com.cn

400-901-9800

— DATASHEET —

Host: Rabbit	Isotype: IgG	Applications: WB (1:500-2000)
Clonality: Polyclonal		
GeneID: 55177		
Target: PTPIP51		
Immunogen: KLH conjugated synthetic peptide derived from human PTPIP51/FAM82A2: 101-180/470.		
Purification: affinity purified by Protein A		
Concentration: 1mg/ml		
Storage: 0.01M TBS (pH7.4) with 1% BSA, 0.02% Proclin300 and 50% Glycerol. Shipped at 4°C. Store at -20°C for one year. Avoid repeated freeze/thaw cycles.		Reactivity: Human, Mouse, Rat (predicted: Rabbit, Pig, Sheep, Cow, Dog, Horse)
Background: RMDN3 (Regulator Of Microtubule Dynamics 3) is a Protein Coding gene. Diseases associated with RMDN3 include Amyotrophic Lateral Sclerosis 16, Juvenile and Amyotrophic Lateral Sclerosis 8. An important paralog of this gene is RMDN2.		Predicted MW.: 52 kDa
		Subcellular Location: Cell membrane ,Cytoplasm ,Nucleus

— VALIDATION IMAGES —



Sample: Lane 1: Mouse Cerebrum tissue lysates
Lane 2: Rat Cerebrum tissue lysates Lane 3:
Human U251 cell lysates Primary: Anti- PTPIP51
(bs-5719R) at 1/1000 dilution Secondary:
IRDye800CW Goat Anti-Rabbit IgG at 1/20000
dilution Predicted band size: 52 kD Observed
band size: 52 kD