

**bs-0261R****[ Primary Antibody ]****Bioss**  
**ANTIBODIES**

www.bioss.com.cn

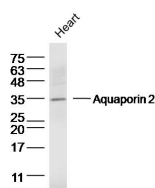
sales@bioss.com.cn

techsupport@bioss.com.cn

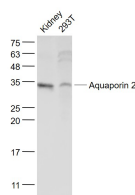
400-901-9800

**AQP2 Rabbit pAb****— DATASHEET —**

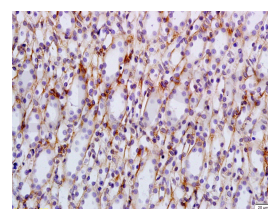
<b>Host:</b> Rabbit	<b>Isotype:</b> IgG	<b>Applications:</b> WB (1:500-2000) <b>IHC-P</b> (1:100-500) <b>IHC-F</b> (1:100-500) <b>IF</b> (1:100-500)  <b>Reactivity:</b> Human, Mouse, Rat  <b>Predicted MW.:</b> 30 kDa  <b>Subcellular Location:</b> Cell membrane ,Cytoplasm
<b>Clonality:</b> Polyclonal		
<b>GeneID:</b> 359	<b>SWISS:</b> P41181	
<b>Target:</b> AQP2		
<b>Immunogen:</b> KLH conjugated synthetic peptide derived from human AQP2: 101-200/271. < Extracellular >		
<b>Purification:</b> affinity purified by Protein A		
<b>Concentration:</b> 1mg/ml		
<b>Storage:</b> 0.01M TBS (pH7.4) with 1% BSA, 0.02% Proclin300 and 50% Glycerol. Shipped at 4°C. Store at -20°C for one year. Avoid repeated freeze/thaw cycles.		
<b>Background:</b> This gene encodes a water channel protein located in the kidney collecting tubule. It belongs to the MIP/aquaporin family, some members of which are clustered together on chromosome 12q13. Mutations in this gene have been linked to autosomal dominant, and recessive forms of nephrogenic diabetes insipidus. Belongs to the MIP/aquaporin (TC 1.A.8) family.		

**— VALIDATION IMAGES —**

Sample: Heart (Mouse) Lysate at 40 ug Primary: Anti-Aquaporin 2 (bs-0261R) at 1/300 dilution  
 Secondary: IRDye800CW Goat Anti-Rabbit IgG at 1/20000 dilution Predicted band size: 30 kD  
 Observed band size: 35 kD



Sample: Kidney (Mouse) Lysate at 40 ug  
 293T(Human) Cell Lysate at 30 ug Primary: Anti-Aquaporin 2 (bs-0261R) at 1/1000 dilution  
 Secondary: IRDye800CW Goat Anti-Rabbit IgG at 1/20000 dilution Predicted band size: 30 kD  
 Observed band size: 32 kD



Tissue/cell: rat kidney tissue; 4% Paraformaldehyde-fixed and paraffin-embedded; Antigen retrieval: citrate buffer (0.01M, pH 6.0), Boiling bathing for 15min; Block endogenous peroxidase by 3% Hydrogen peroxide for 30min; Blocking buffer (normal goat serum, C-0005) at 37°C for 20 min; Incubation: Anti-AQP-2 Polyclonal Antibody, Unconjugated(bs-0261R) 1:200, overnight at 4°C, followed by conjugation to the secondary antibody(SP-0023) and DAB(C-0010) staining

**— SELECTED CITATIONS —**

- **[IF=2.386]** Kai Zhang. et al. Investigation of Neuroprotective Effects of Erythropoietin on Chronic Neuropathic Pain in a Chronic Constriction Injury Rat Model. J Pain Res. 2020; 13: 3147–3155 WB ;Rat. 33311994