

bs-0058R**[Primary Antibody]****BioSS**
ANTIBODIES

www.bioss.com.cn

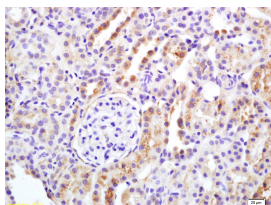
sales@bioss.com.cn

techsupport@bioss.com.cn

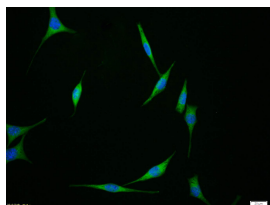
400-901-9800

APAF1(CT) Rabbit pAb**— DATASHEET —**

Host: Rabbit	Isotype: IgG	Applications: IHC-P (1:100-500) IHC-F (1:100-500) IF (1:100-500) ICC/IF (1:100-500)
Clonality: Polyclonal		
GeneID: 317	SWISS: Q14727	
Target: APAF1(CT)		
Immunogen: KLH conjugated synthetic peptide derived from human Apaf-1: 1201-1248/1248.		Reactivity: Human, Rat (predicted: Mouse, Dog, Horse, Danio rerio)
Purification: affinity purified by Protein A		
Concentration: 1mg/ml		Predicted MW.: 137 kDa
Storage: 0.01M TBS (pH7.4) with 1% BSA, 0.02% Proclin300 and 50% Glycerol. Shipped at 4°C. Store at -20°C for one year. Avoid repeated freeze/thaw cycles.		Subcellular Location: Cytoplasm
Background: This gene encodes a cytoplasmic protein that initiates apoptosis. This protein contains several copies of the WD-40 domain, a caspase recruitment domain (CARD), and an ATPase domain(NB-ARC). Upon binding cytochrome c and dATP, this protein forms an oligomeric apoptosome. The apoptosome binds and cleaves caspase 9 preproprotein, releasing its mature, activated form. Activated caspase 9 stimulates the subsequent caspase cascade that commits the cell to apoptosis. Alternative splicing results in several transcript variants encoding different isoforms. [provided by RefSeq, Jul 2008].		

— VALIDATION IMAGES —

Tissue/cell: rat kidney tissue; 4% Paraformaldehyde-fixed and paraffin-embedded; Antigen retrieval: citrate buffer (0.01M, pH 6.0), Boiling bathing for 15min; Block endogenous peroxidase by 3% Hydrogen peroxide for 30min; Blocking buffer (normal goat serum, C-0005) at 37°C for 20 min; Incubation: Anti-APAF1(CT) Polyclonal Antibody, Unconjugated(bs-0058R) 1:200, overnight at 4°C, followed by conjugation to the secondary antibody(SP-0023) and DAB(C-0010) staining



Tissue/cell: SH-SY5Y cell; 4% Paraformaldehyde-fixed; Triton X-100 at room temperature for 20 min; Blocking buffer (normal goat serum, C-0005) at 37°C for 20 min; Antibody incubation with (APAF1(CT)) polyclonal Antibody, Unconjugated (bs-0058R) 1:100, 90 minutes at 37°C; followed by a FITC conjugated Goat Anti-Rabbit IgG antibody at 37°C for 90 minutes, DAPI (blue, C02-04002) was used to stain the cell nuclei.

— SELECTED CITATIONS —

- **[IF=4.9]** Lucía Íñigo-Catalina. et al. DINCH Exposure Triggers Inflammatory, Oxidative, and Apoptotic Pathways in the Liver of Long-Evans Lactating Rats and Their Offspring. INT J MOL SCI. 2024 Jan;25(23):13017 WB ;Rat. 39684727
- **[IF=3.8]** Qiuxiang Cai. et al. Pasteurella multocida causes liver injury in ducks by mediating inflammatory, apoptotic and autophagic pathways. MICROB PATHOGENESIS. 2023 Sep;:106336 WB ;Duck. 37683832
- **[IF=3.257]** Shi et al. Human interleukin 23 receptor induces cell apoptosis in mammalian cells by intrinsic mitochondrial pathway associated with the down-regulation of RAS/mitogen-activated protein kinase and signal

Important Note: This product as supplied is intended for research use only, not for use in human, therapeutic or diagnostic applications.

transducers and activators of transcription factor 3 signaling pathways. (2013) Int.J.Mol.Sc. 14:24656-69 WB ;Human. 24351840

- **[IF=3.182]** Xiang Y et al. MiR-186 bidirectionally regulates cisplatin sensitivity of ovarian cancer cells via suppressing targets PIK3R3 and PTEN and upregulating APAF1 expression. J Cancer. 2020 Mar 13;11(12):3446-3453. WB ;human. 32284740