

bs-1228R**[Primary Antibody]****alpha Adaptin Rabbit pAb****BioSS**
ANTIBODIES

www.bioss.com.cn

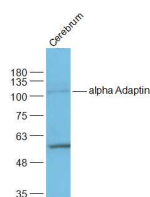
sales@bioss.com.cn

techsupport@bioss.com.cn

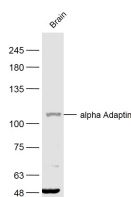
400-901-9800

— DATASHEET —

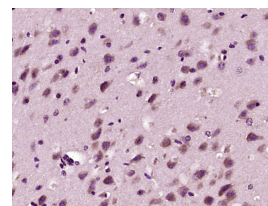
Host: Rabbit	Isotype: IgG	Applications: WB (1:500-2000)
Clonality: Polyclonal		IHC-P (1:100-500)
GeneID: 160	SWISS: Q94973	IHC-F (1:100-500)
Target: alpha Adaptin		IF (1:100-500)
Immunogen: KLH conjugated synthetic peptide derived from human alpha Adaptin: 21-150/939.		Reactivity: Human, Mouse, Rat (predicted: Rabbit, Cow, Horse)
Purification: affinity purified by Protein A		
Concentration: 1mg/ml		Predicted MW.: 103 kDa
Storage: 0.01M TBS (pH7.4) with 1% BSA, 0.02% Proclin300 and 50% Glycerol. Shipped at 4°C. Store at -20°C for one year. Avoid repeated freeze/thaw cycles.		Subcellular Location: Cell membrane ,Cytoplasm
Background: Clathrin-mediated endocytosis is the pathway by which many receptors for nutrients and hormones are internalized to be recycled or down-regulated. During formation of clathrin coated membranes, clathrin co-assembles with heterotetrameric molecules known as assembly polypeptides (APs) or adaptors which form a layer of protein coat between the clathrin lattice and the membrane. There are two characterized adaptors AP1 and AP2. AP1 is associated with clathrin coated vesicles at the trans-Golgi network and AP2 is associated with the endocytic clathrin coated vesicles at the plasma membrane and has been shown to specifically interact with Shc and EGF receptor. AP2 is composed of four subunits, two separate 100 kDa gene products with similar domain structures (alpha and beta adaptin) and a 50 and 17 kDa subunit. There are two alpha-adaptin genes, alpha A and alpha C which have a tissue specific pattern of expression.		

— VALIDATION IMAGES —

Sample: Cerebrum (Rat) Lysate at 40 ug Primary:
Anti-alpha Adaptin (bs-1228R) at 1/2000 dilution
Secondary: IRDye800CW Goat Anti-Rabbit IgG at
1/20000 dilution Predicted band size: 103 kD
Observed band size: 103 kD



Sample: Brain (Mouse) Lysate at 40 ug Primary:
Anti-alpha Adaptin (bs-1228R) at 1/300 dilution
Secondary: IRDye800CW Goat Anti-Rabbit IgG at
1/20000 dilution Predicted band size: 103 kD
Observed band size: 103 kD



Paraformaldehyde-fixed, paraffin embedded (mouse brain tissue); Antigen retrieval by boiling in sodium citrate buffer (pH6.0) for 15min; Block endogenous peroxidase by 3% hydrogen peroxide for 20 minutes; Blocking buffer (normal goat serum) at 37°C for 30min; Antibody incubation with (alpha Adaptin) Polyclonal Antibody, Unconjugated (bs-1228R) at 1:400 overnight at 4°C, followed by operating according to SP Kit(Rabbit) (sp-0023) instructions and DAB staining.