
TAS2R5 Rabbit pAb

Catalog Number: bs-11614R

Target Protein: TAS2R5

Concentration: 1mg/ml

Form: Liquid

Host: Rabbit

Clonality: Polyclonal

Isotype: IgG

Applications: WB (1:500-2000)

Reactivity: Human

Predicted MW: 34 kDa

Entrez Gene: 54429

Swiss Prot: Q9NYW4

Source: KLH conjugated synthetic peptide derived from human TAS2R5: 51-150/299.

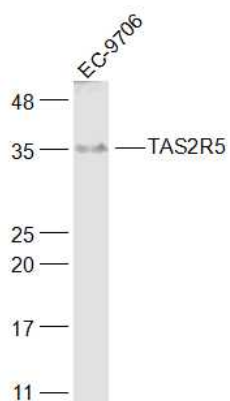
Purification: affinity purified by Protein A

Storage: 0.01M TBS (pH7.4) with 1% BSA, 0.02% Proclin300 and 50% Glycerol.

Shipped at 4°C. Store at -20°C for one year. Avoid repeated freeze/thaw cycles.

Background: This gene encodes a bitter taste receptor; bitter taste receptors are members of the G protein-coupled receptor superfamily and are specifically expressed by taste receptor cells of the tongue and palate epithelia. Each of these apparently intronless taste receptor genes encodes a 7-transmembrane receptor protein, functioning as a bitter taste receptor. This gene is clustered with another 3 candidate taste receptor genes on chromosome 7 and is genetically linked to loci that influence bitter perception. [provided by RefSeq, Jul 2008].

VALIDATION IMAGES



Sample: EC-9706(Human) Cell Lysate at 30 ug Primary: Anti-TAS2R5 (bs-11614R) at 1/1000 dilution
Secondary: IRDye800CW Goat Anti-Rabbit IgG at 1/20000 dilution Predicted band size: 34 kD Observed band size: 35 kD