

bs-11590R**[Primary Antibody]****LRP5L Rabbit pAb****Bioss**
ANTIBODIES

www.bioss.com.cn

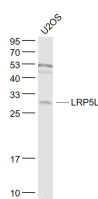
sales@bioss.com.cn

techsupport@bioss.com.cn

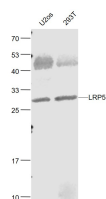
400-901-9800

— DATASHEET —

Host: Rabbit Clonality: Polyclonal GeneID: 91355 Target: LRP5L Immunogen: KLH conjugated synthetic peptide derived from human LRP5L: 101-200/252. Purification: affinity purified by Protein A Concentration: 1mg/ml Storage: 0.01M TBS (pH7.4) with 1% BSA, 0.02% Proclin300 and 50% Glycerol. Shipped at 4°C. Store at -20°C for one year. Avoid repeated freeze/thaw cycles. Background: Members of the LDL receptor gene family, including LDLR (low density lipo-protein receptor), LRP5 (low density lipoprotein related proteins), Megalin (also designated GP330), VLDLR (very low density lipoprotein receptor) and ApoER2, are characterized by a cluster of cysteine-rich class A repeats, epidermal growth factor (EGF)-like repeats, YWTD repeats and an O-linked sugar domain. Of the known family members, LRP5 is most closely related to LRP1. However, LRP5 has a unique organization of EGF and LDLR repeats compared to other LDLR family members and likely represents a new category in this family. LRP5 is expressed in rat tibia, specifically in areas of the bone that are involved in remodeling. LRP5 is a Wnt coreceptor that binds to Axin and regulates the canonical Wnt signaling pathway. LRP5 affects bone mass accrual during growth. Mutations in LRP5 cause the autosomal recessive disorder osteoporosis-pseudoglioma syndrome (OPPG). LRP5L is a related protein that exists as two isoforms produced by alternative splicing.	Isotype: IgG SWISS: A4QPB2 Applications: WB (1:500-2000) Reactivity: Human (predicted: Mouse, Rat, Sheep, Chicken) Predicted MW.: 28 kDa Subcellular Location: Cytoplasm ,Nucleus
---	--

— VALIDATION IMAGES —

Sample: U2OS(Human) Cell Lysate at 30 ug
Primary: Anti- LRP5L (bs-11590R) at 1/1000 dilution
Secondary: IRDye800CW Goat Anti-Rabbit IgG at 1/20000 dilution
Predicted band size: 28 kD
Observed band size: 28 kD



Sample: 293T(Human) Cell Lysate at 30 ug
Primary: Anti- LRP5L (bs-11590R) at 1/1000 dilution
Secondary: IRDye800CW Goat Anti-Rabbit IgG at 1/20000 dilution
Predicted band size: 28 kD
Observed band size: 28 kD