

bs-17216R**[Primary Antibody]****KAAG1 Rabbit pAb****Bioss**
ANTIBODIES

www.bioss.com.cn

sales@bioss.com.cn

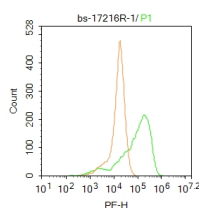
techsupport@bioss.com.cn

400-901-9800

— DATASHEET —

Host: Rabbit	Isotype: IgG	Applications: Flow-Cyt (1ug/Test)
Clonality: Polyclonal		Reactivity: Human
GeneID: 353219	SWISS: Q9UBP8	
Target: KAAG1		
Immunogen: KLH conjugated synthetic peptide derived from human KAAG1: 31-84/84.		Predicted MW.: 9 kDa
Purification: affinity purified by Protein A		Subcellular Location: Cytoplasm
Concentration: 1mg/ml		
Storage: 0.01M TBS (pH7.4) with 1% BSA, 0.02% Proclin300 and 50% Glycerol. Shipped at 4°C. Store at -20°C for one year. Avoid repeated freeze/thaw cycles.		

— VALIDATION IMAGES —



Blank control: A549. Primary Antibody (green line): Rabbit Anti-KAAG1 antibody (bs-17216R)
Dilution: 1µg /10⁶ cells; Isotype Control Antibody (orange line): Rabbit IgG . Secondary Antibody : Goat anti-rabbit IgG-PE Dilution: 1µg /test. Protocol The cells were fixed with 4% PFA (10min at room temperature)and then permeabilized with PBST for 20 min at room temperature. The cells were then incubated in 5%BSA to block non-specific protein-protein interactions for 30 min at room temperature .Cells stained with Primary Antibody for 30 min at room temperature. The secondary antibody used for 40 min at room temperature. Acquisition of 20,000 events was performed.