

**bs-17213R****[ Primary Antibody ]****JAM2 Rabbit pAb****BioSS**  
**ANTIBODIES**

www.bioss.com.cn

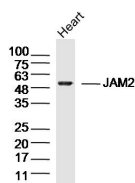
sales@bioss.com.cn

techsupport@bioss.com.cn

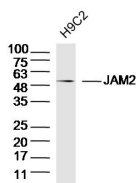
400-901-9800

**— DATASHEET —**

<b>Host:</b> Rabbit	<b>Isotype:</b> IgG	<b>Applications:</b> WB (1:500-2000)
<b>Clonality:</b> Polyclonal		
<b>GeneID:</b> 58494	<b>SWISS:</b> P57087	
<b>Target:</b> JAM2		
<b>Immunogen:</b> KLH conjugated synthetic peptide derived from human JAM2: 201-298/298.		
<b>Purification:</b> affinity purified by Protein A		<b>Reactivity:</b> Mouse, Rat (predicted: Rabbit, Cow, Chimpanzee, Macaque, Monkey, Gorilla, Orangutan)
<b>Concentration:</b> 1mg/ml		
<b>Storage:</b> 0.01M TBS (pH7.4) with 1% BSA, 0.02% Proclin300 and 50% Glycerol. Shipped at 4°C. Store at -20°C for one year. Avoid repeated freeze/thaw cycles.		
<b>Background:</b> This gene belongs to the immunoglobulin superfamily, and the junctional adhesion molecule (JAM) family. The protein encoded by this gene is a type I membrane protein that is localized at the tight junctions of both epithelial and endothelial cells. It acts as an adhesive ligand for interacting with a variety of immune cell types, and may play a role in lymphocyte homing to secondary lymphoid organs. Alternatively spliced transcript variants have been found for this gene. [provided by RefSeq, Jul 2012]		
		<b>Predicted MW.:</b> 48 kDa
		<b>Subcellular Location:</b> Cell membrane

**— VALIDATION IMAGES —**

Sample: Heart (Mouse) Lysate at 40 ug Primary:  
Anti-JAM2 (bs-17213R) at 1/300 dilution  
Secondary: IRDye800CW Goat Anti-Rabbit IgG at  
1/20000 dilution Predicted band size: 48kD  
Observed band size: 50kD



Sample: H9C2 Cell (Rat) Lysate at 30 ug Primary:  
Anti-JAM2 (bs-17213R) at 1/300 dilution  
Secondary: IRDye800CW Goat Anti-Rabbit IgG at  
1/20000 dilution Predicted band size: 48kD  
Observed band size: 50kD