

bs-17206R**[Primary Antibody]****Josephin-1 Rabbit pAb****Bioss**
ANTIBODIES

www.bioss.com.cn

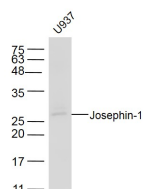
sales@bioss.com.cn

techsupport@bioss.com.cn

400-901-9800

— DATASHEET —

Host: Rabbit	Isotype: IgG	Applications: WB (1:500-2000)
Clonality: Polyclonal		Reactivity: Human (predicted: Mouse, Rat, Pig, Chicken, Dog, Cat, Horse)
GeneID: 9929	SWISS: Q15040	Predicted MW.: 23 kDa
Target: Josephin-1		Subcellular Location: Cell membrane
Immunogen: KLH conjugated synthetic peptide derived from human JOSD1: 1-100/202.		
Purification: affinity purified by Protein A		
Concentration: 1mg/ml		
Storage: 0.01M TBS (pH7.4) with 1% BSA, 0.02% Proclin300 and 50% Glycerol. Shipped at 4°C. Store at -20°C for one year. Avoid repeated freeze/thaw cycles.		
Background: Josephin-1 is a 202 amino acid protein that contains one josephin domain and is encoded by a gene that maps to human chromosome 22. Chromosome 22 houses over 500 genes and is the second smallest human chromosome. Mutations in several of the genes that map to chromosome 22 are involved in the development of Phelan-McDermid syndrome, Neurofibromatosis type 2, autism and schizophrenia. Additionally, translocations between chromosomes 9 and 22 may lead to the formation of the Philadelphia Chromosome and the subsequent production of the novel fusion protein BCR-Abl, a potent cell proliferation activator found in several types of leukemias.		

— VALIDATION IMAGES —

Sample: U937(Human) Cell Lysate at 40 ug
Primary: Anti-Josephin-1 (bs-17206R) at 1/300
dilution Secondary: IRDye800CW Goat Anti-
Rabbit IgG at 1/20000 dilution Predicted band
size: 27 kD Observed band size: 27 kD