

Jaw1 Rabbit pAb

Catalog Number: bs-17199R

Target Protein: Jaw1

Concentration: 1mg/ml

Form: Liquid

Host: Rabbit

Clonality: Polyclonal

Isotype: IgG

Applications: WB (1:500-2000), IHC-P (1:100-500), IHC-F (1:100-500), IF (1:100-500)

Reactivity: Human, Rat (predicted:Mouse)

Predicted MW: 62 kDa

Subcellular: Cell membrane ,Cytoplasm

Locations:

Entrez Gene: 4033

Swiss Prot: Q12912

Source: KLH conjugated synthetic peptide derived from human Jaw1: 401-500/555.

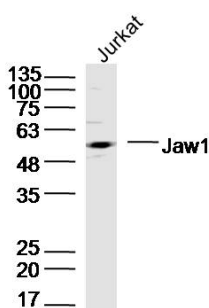
Purification: affinity purified by Protein A

Storage: 0.01M TBS (pH7.4) with 1% BSA, 0.02% Proclin300 and 50% Glycerol.

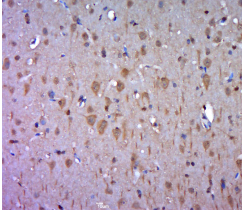
Shipped at 4°C. Store at -20°C for one year. Avoid repeated freeze/thaw cycles.

Background: The protein encoded by this gene is expressed in a developmentally regulated manner in lymphoid cell lines and tissues. The protein is localized to the cytoplasmic face of the endoplasmic reticulum. [provided by RefSeq, Jul 2008]

VALIDATION IMAGES



Sample: Jurkat (Human) Cell Lysate at 40 ug Primary: Anti-Jaw1(bs-17199R) at 1/300 dilution Secondary: IRDye800CW Goat Anti-Rabbit IgG at 1/20000 dilution Predicted band size: 62kD Observed band size: 62kD



Paraformaldehyde-fixed, paraffin embedded (rat brain tissue); Antigen retrieval by boiling in sodium citrate buffer (pH6.0) for 15min; Block endogenous peroxidase by 3% hydrogen peroxide for 20 minutes; Blocking buffer (normal goat serum) at 37°C for 30min; Antibody incubation with (Jaw1) Polyclonal Antibody, Unconjugated (bs-17199R) at 1:400 overnight at 4°C, followed by a conjugated secondary (sp-0023) for 20 minutes and DAB staining.